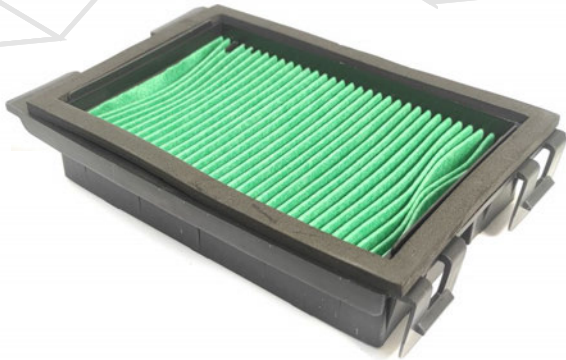


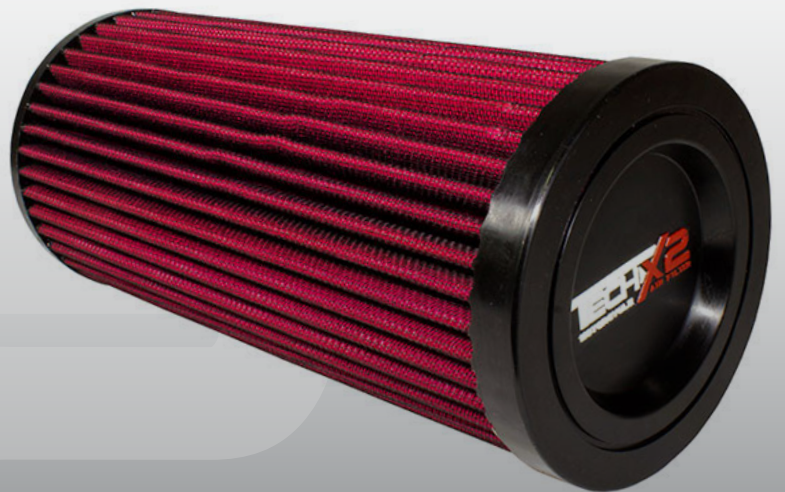
TECHX2

MOTORCYCLE FILTER



CATÁLOGO FILTROS DE AIRE

MOTO
ATV
UTV



ELEMENTO FILTRO AIRE P / DL-650 V-STROM

132-051001



ESPECIFICACIONES

Material: Papel de celulosa
Diseño: Rígido

APLICACIONES

KAWASAKI MOTORCYCLE

KLV1000 04-06

SUZUKI MOTORCYCLE

DL650 K4,K5,K6 V-STROM 04-06
DL650 K7,K8,K9,LO,L1,L2 V-STROM 07-12
DL650 LO V-STROM X 10
DL650 A-L0,L1,L2,L3,L4,L5,L6,L7,L8 V-STROM ABS 10-18
DL650 A-XA L9 V-STROM ABS 19
DL650 A V-STROM ABS 20
DL650 V-STROM 21
DL650 XA-L5,L6,L7,L8 XT V-STROM ABS 15-18
DL650 XA-L9,MO V-STROM XT 19-20
DL650 V-STROM XT 21
DL650 V-STROM XT TOURING 19-20
DL650 V-STROM XT ADVENTURE 21
DL650 XA-L9 V-STROM ABS 19
DL650 A V-STROM TRAVELLER 10
DL650 A V-STROM GT 10
DL1000 K2,K3,K4,K5,K6,K7,K8,K9,LO V-STROM 02-10
DL1000 SE LO V-STROM 10

ELEMENTO FILTRO AIRE P / NS200

132-075012



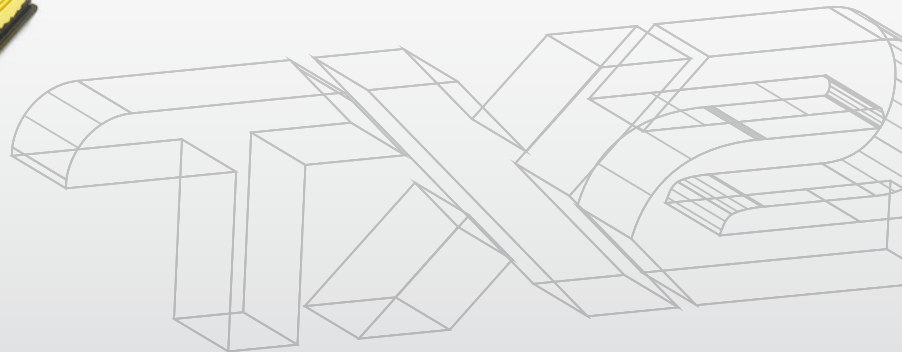
ESPECIFICACIONES

Peso: 0,3 KG
Dimensiones: 25 X 15 X 4 cm

APLICACIONES

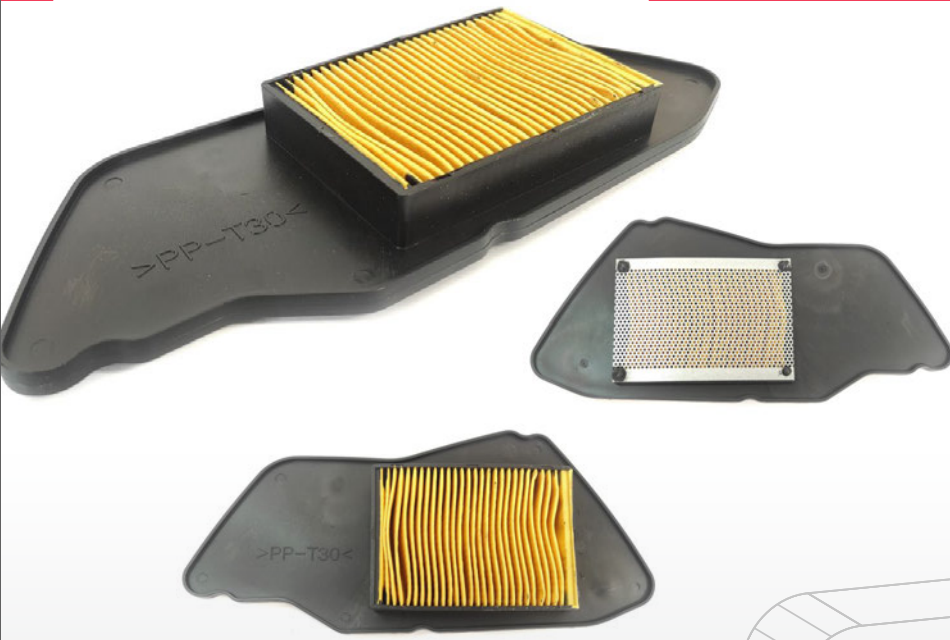
BAJAJ MOTORCYCLE

NS200



ELEMENTO FILTRO AIRE TECHX2 P / BWS-125

132-131003

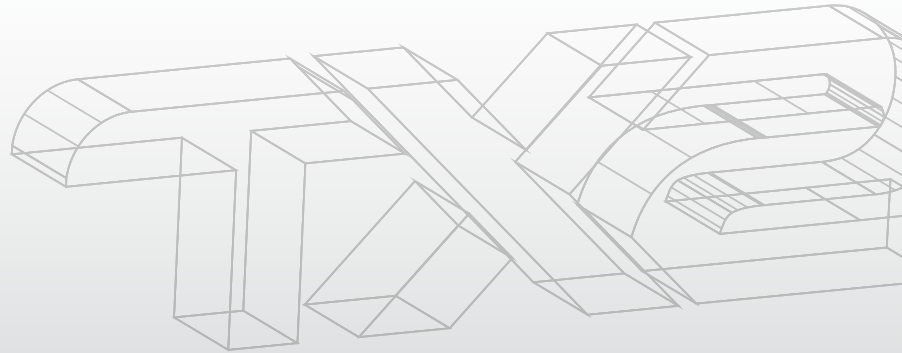


APLICACIONES

YAMAHA MOTORCYCLE
YAMAHA BWS-125

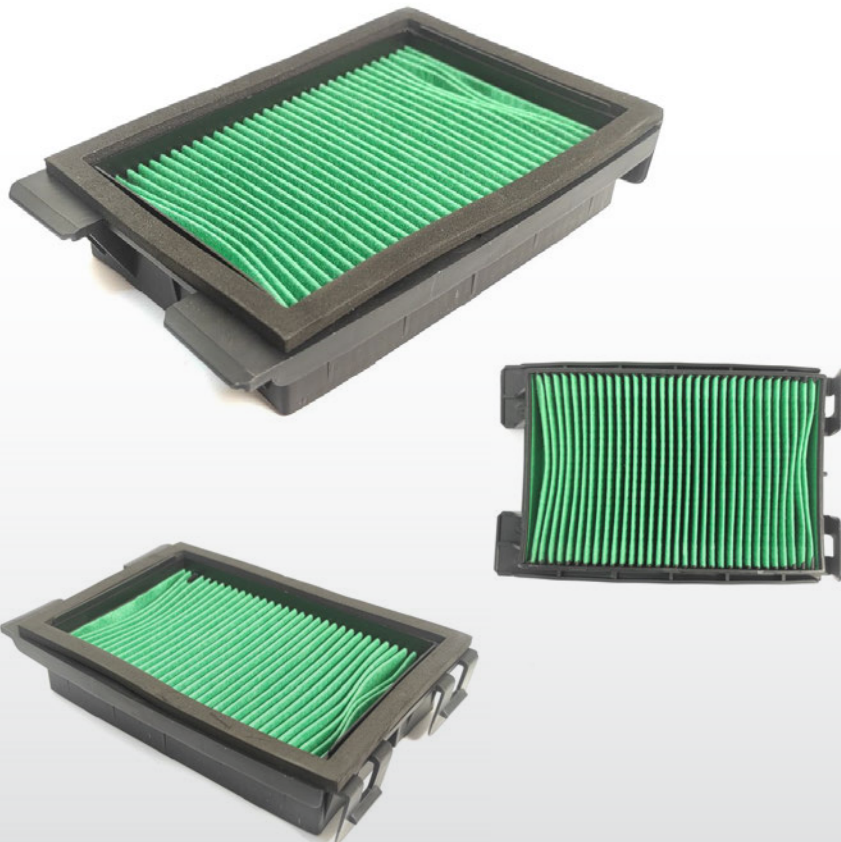
ESPECIFICACIONES

Material: Plástico
Diámetro de entrada: 1 cm
Diseño: Rígido



ELEMENTO FILTRO AIRE TECHX2 P / CBR-250

132-001039



APLICACIONES

HONDA MOTORCYCLE
HONDA CBR-250

ESPECIFICACIONES

Forma del filtro de aire: Panel
Material del filtro de aire: Gasa de algodón
Lavable: Sí
Altura: 24 mm (0,938 pulg.)
Longitud exterior: 6,438 pulg. (164 mm)
Ancho exterior: 4,438 in (113 mm)
Peso: 0,6 libras (0,3 kg)
Cantidad de relubricación del filtro: 0,38 oz (11 ml)

ELEMENTO FILTRO AIRE TECHX2 P / DUKE 200

132-001059



APLICACIONES

KTM MOTORCYCLE

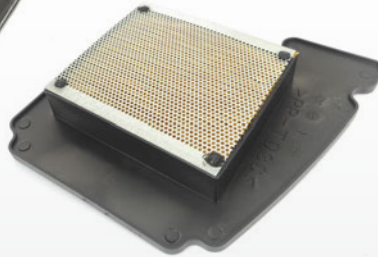
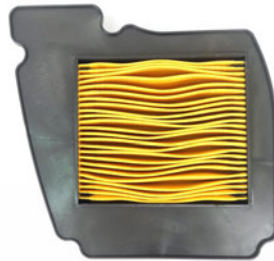
125 DUKE 11-16
125 RC 14-19
125 RC 20
200 DUKE 12-19
200 RC 14-18
200 RC 19
200 RC 20
200 RC 22
250 DUKE 15-16
250 RC 15-17
390 DUKE 13-16
390 RC 14-17
390 RC 17-18
390 RC 19
390 RC 20
390 RC 21
90 RC R 18

ESPECIFICACIONES

Forma del filtro de aire: Panel
Material del filtro de aire: Gasa de algodón
Lavable: Sí
Altura: 1,563 pulgadas (40 mm)
Longitud exterior: 5,563 in (141 mm)
Ancho exterior: 4,313 in (110 mm)
Peso: 0,6 libras (0,3 kg)
Cantidad de relubricación del filtro: 0,33 oz (10 ml)
Altura de la caja del producto: 9,69 in (246 mm)
Longitud de la caja del producto: 7,72 in (196 mm)
Ancho de la caja del producto: 1,75 in (44 mm)

ELEMENTO FILTRO AIRE TECHX2 P / FZ-16

132-132003



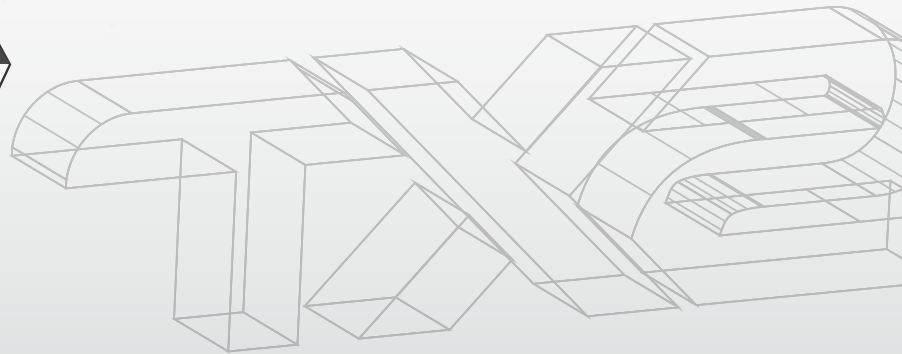
APLICACIONES

YAMAHA MOTORCYCLE

2011 YAMAHA FZ150 FAZER 153
2011 YAMAHA FZ16 153
2010 YAMAHA FZ150 FAZER 153
2010 YAMAHA FZ16 153
2009 YAMAHA FZ150 FAZER 153
2009 YAMAHA FZ16 153
2008 YAMAHA FZ16 153

ESPECIFICACIONES

Forma del filtro de aire: Panel
Altura: 19 mm (0,75 pulg.)
Lavable: Sí
Material del filtro de aire: Gasa de algodón
Estilo de Producto: Filtros de aire exclusivos
Bridas: Ninguno
Ancho: 8 pulgadas (203 mm)
Longitud: 8,5 pulgadas (216 mm)
Peso: 0,7 libras (0,3 kg)
Cantidad de relubricación del filtro: 0,66 oz (20 ml)



APLICACIONES

CAN AM

- 2021 CAN-AM MAVERICK SPORT 1000R X MR 976
- 2021 CAN-AM MAVERICK SPORT 1000R X RC 976
- 2021 CAN-AM MAVERICK SPORT 1000R X XC 976
- 2021 CAN-AM MAVERICK SPORT MAX 1000R DPS 976
- 2020 CAN-AM MAVERICK SPORT 1000R DPS 976
- 2020 CAN-AM MAVERICK SPORT 1000R X MR 976
- 2020 CAN-AM MAVERICK SPORT 1000R X RC 976
- 2020 CAN-AM MAVERICK SPORT MAX 1000R DPS 976
- 2019 CAN-AM MAVERICK MAX 1000R DPS 976
- 2019 CAN-AM MAVERICK MAX 1000R DPS TIB 976
- 2019 CAN-AM MAVERICK SPORT 1000R DPS 976
- 2019 CAN-AM MAVERICK X3 MAX TURBO 900
- 2019 CAN-AM MAVERICK X3 MAX TURBO R 900
- 2019 CAN-AM MAVERICK X3 MAX X DS TURBO R 900
- 2019 CAN-AM MAVERICK X3 MAX X RS TURBO R 900
- 2019 CAN-AM MAVERICK X3 TURBO 900
- 2019 CAN-AM MAVERICK X3 TURBO R 900
- 2019 CAN-AM MAVERICK X3 X DS TURBO R 900
- 2019 CAN-AM MAVERICK X3 X MR TURBO 900
- 2019 CAN-AM MAVERICK X3 X MR TURBO R 900
- 2019 CAN-AM MAVERICK X3 X RC TURBO 900
- 2019 CAN-AM MAVERICK X3 X RC TURBO R 900
- 2019 CAN-AM MAVERICK X3 X RS TURBO R 900
- 2018 CAN-AM MAVERICK X3 HO 900
- 2018 CAN-AM MAVERICK X3 MAX TURBO 900
- 2018 CAN-AM MAVERICK X3 MAX TURBO R 900
- 2018 CAN-AM MAVERICK X3 MAX X DS TURBO R 900
- 2018 CAN-AM MAVERICK X3 MAX X RS TURBO R 900
- 2018 CAN-AM MAVERICK X3 TURBO 900
- 2018 CAN-AM MAVERICK X3 TURBO R 900
- 2018 CAN-AM MAVERICK X3 X DS TURBO R 900
- 2018 CAN-AM MAVERICK X3 X MR TURBO 900
- 2018 CAN-AM MAVERICK X3 X MR TURBO R 900
- 2018 CAN-AM MAVERICK X3 X RC TURBO 900
- 2018 CAN-AM MAVERICK X3 X RC TURBO R 900
- 2018 CAN-AM MAVERICK X3 X RS TURBO R 900
- 2017 CAN-AM MAVERICK X3 MAX TURBO R 900
- 2017 CAN-AM MAVERICK X3 MAX X DS TURBO R 900
- 2017 CAN-AM MAVERICK X3 MAX X RS TURBO R 900
- 2017 CAN-AM MAVERICK X3 TURBO 900
- 2017 CAN-AM MAVERICK X3 TURBO R 900
- 2017 CAN-AM MAVERICK X3 X DS TURBO R 900
- 2017 CAN-AM MAVERICK X3 X RS TURBO R 900

ESPECIFICACIONES

Material del filtro de aire: Gasa de algodón
 Altura: 12.938 pulgadas (329 mm)
 Diámetro interior de la brida: 3.438 in (87 mm)
 Tipo de brida: Centrada
 Estilo superior: Caucho
 Diámetro exterior: 5 in (127 mm)
 Peso: 2.1 libras (0.9 kg)
 Cantidad de relubricación del filtro: 5.57 oz (165 ml)
 Alambre interno: No



ELEMENTO FILTRO AIRE TECHX2 P / RZR 900 (8715)

132-001024



APLICACIONES

POLARIS

21-22 POLARIS GENERAL 1000 DELUX 999
2022 POLARIS GENERAL 1000 DELUX RIDE COMMAND ED 999
21-22 POLARIS GENERAL 1000 PREMIUM 999
21-22 POLARIS GENERAL 1000 SPORT 999
2022 POLARIS GENERAL 4 1000 DELUXE RIDE COMMAND ED 999
21-22 POLARIS GENERAL 4 1000 PREMIUM 999
21-22 POLARIS GENERAL XP 1000 DELUXE 999
2022 POLARIS GENERAL XP 1000 DELUXE RIDE COMMAND ED 999
2022 POLARIS GENERAL XP 4 1000 DELUXE 999
2022 POLARIS GENERAL XP 4 1000 DELUXE RIDE COMMAND ED 999
2022 POLARIS GENERAL XP 1000 TRAILHEAD EDITION 999
2022 POLARIS RZR TRAIL PREMIUM 875
2022 POLARIS RZR TRAIL S 1000 PREMIUM 999
2022 POLARIS RZR TRAIL S 1000 ULTIMATE 999
2022 POLARIS RZR TRAIL SPORT 875
2022 POLARIS RZR TRAIL ULTIMATE 875
2021 POLARIS GENERAL 1000 999
2021 POLARIS GENERAL 4 1000 999
2021 POLARIS GENERAL 4 1000 DELUXE 999
2021 POLARIS GENERAL XP 1000 FACTORY CUSTOM EDITION 999

ESPECIFICACIONES

Material del filtro de aire: Gasa de algodón
Altura: 11.063 pulgadas (281 mm)
Alambre interno: No
Diámetro interior: 2.5 pulg. (64 mm)
Diámetro exterior: 5 in (127 mm)
Estilo superior: Caucho
Material superior: Ninguno
Forma de filtro de aire: Redondo
Bridas: 1
Lavable: Sí
Estilo del producto: Filtro de aire redondo
Brida Diámetro interior: 2.469 in (63 mm)
Longitud de la brida: 0.563 in (14 mm)
Tipo de brida: Centrada
Peso: 2.4 libras (1.1 kg)
Cantidad de relubricación del filtro: 4.64 oz (137 ml)

ELEMENTO FILTRO AIRE TECHX2 P / RZR XP 4 1000 EPS (1014)

132-001025



ESPECIFICACIONES

Material del filtro de aire: Gasa de algodón
Altura: 11.125 pulgadas (283 mm)
Alambre interno: No
Diámetro interior: 3 in (76 mm)
Diámetro exterior: 5.563 in (141 mm)
Estilo superior: Caucho
Material superior: Ninguno
Forma del filtro de aire: Redondo Recto
Bridas: 1
Lavable: Sí
Estilo del producto: Filtro de aire redondo
Brida Diámetro interior: 3 in (76 mm)
Longitud de la brida: 0.75 in (19 mm)
Tipo de brida: Centrada
Peso: 2.7 libras (1.2 kg)
Cantidad de relubricación del filtro: 7.34 oz (217 ml.)

APLICACIONES PAG SIGUIENTE ▼

**APLICACIONES****POLARIS**

- 2019 POLARIS RZR XP 1000 EPS HIGH LIFTER EDITION 999
 2019 POLARIS RZR XP 1000 EPS RIDE COMMAND ED. 999
 2019 POLARIS RZR XP 1000 EPS TRAILS & ROCK EDITION 999
 2019 POLARIS RZR XP 4 1000 EPS 999
 2019 POLARIS RZR XP 4 1000 EPS DYNAMIX EDITION 999
 2019 POLARIS RZR XP 4 1000 EPS HIGH LIFTER ED. 999
 2019 POLARIS RZR XP 4 1000 EPS RIDE COMMAND ED. 999
 2019 POLARIS RZR XP 4 TURBO 925
 2019 POLARIS RZR XP 4 TURBO EPS 925
 2019 POLARIS RZR XP 4 TURBO EPS DYNAMIX EDITION 925
 2019 POLARIS RZR XP 4 TURBO EPS LE 925
 2019 POLARIS RZR XP 4 TURBO EPS LE 925
 2019 POLARIS RZR XP 4 TURBO S 925
 2019 POLARIS RZR XP TURBO EPS 925
 2019 POLARIS RZR XP TURBO EPS DYNAMIX ED. 925
 2019 POLARIS RZR XP TURBO EPS LE 925
 2019 POLARIS RZR XP TURBO S 925
 2018 POLARIS RZR RS1 999
 2018 POLARIS RZR XP 1000 EPS 999
 2018 POLARIS RZR XP 1000 EPS HIGH LIFTER EDITION 999
 2018 POLARIS RZR XP 1000 EPS RIDE COMMAND ED. 999
 2018 POLARIS RZR XP 1000 EPS TRAILS & ROCK EDITION 999
 2018 POLARIS RZR XP 4 1000 EPS 999
 2018 POLARIS RZR XP 4 1000 EPS HIGH LIFTER ED. 999
 2018 POLARIS RZR XP 4 1000 EPS RIDE COMMAND ED. 999
 2018 POLARIS RZR XP 4 TURBO EPS 925
 2018 POLARIS RZR XP 4 TURBO EPS DYNAMIX EDITION 925
 2018 POLARIS RZR XP 4 TURBO EPS FOX EDITION 925
 2018 POLARIS RZR XP TURBO EPS 925
 2018 POLARIS RZR XP TURBO EPS DYNAMIX ED. 925
 2018 POLARIS RZR XP TURBO EPS FOX EDITION 925
 2018 POLARIS RZR XP TURBO S 925
 2017 POLARIS RZR XP 1000 EPS 999
 2017 POLARIS RZR XP 1000 EPS GOLD MATTE METALLIC LE 999
 2017 POLARIS RZR XP 1000 EPS HIGH LIFTER EDITION 999
 2017 POLARIS RZR XP 1000 EPS VELOCITY BLUE LE 999
 2017 POLARIS RZR XP 4 1000 EPS 999
 2017 POLARIS RZR XP 4 1000 EPS HIGH LIFTER ED. 999
 2017 POLARIS RZR XP 4 TURBO EPS 925
 2017 POLARIS RZR XP TURBO EPS 925
 2016 POLARIS RZR XP 1000 EPS 999
 2016 POLARIS RZR XP 1000 EPS HIGH LIFTER EDITION 999
 2016 POLARIS RZR XP 4 1000 EPS 999
 2016 POLARIS RZR XP 4 1000 EPS HIGH LIFTER ED. 999
 2016 POLARIS RZR XP 4 TURBO EPS 925
 2016 POLARIS RZR XP TURBO EPS 925
 2015 POLARIS RZR XP 1000 EPS 999
 2015 POLARIS RZR XP 1000 EPS DESERT EDITION 999
 2015 POLARIS RZR XP 1000 EPS FOX EDITION 999
 2015 POLARIS RZR XP 1000 EPS HIGH LIFTER EDITION 999
 2015 POLARIS RZR XP 4 1000 EPS 999
 2014 POLARIS RZR XP 1000 EPS 999
 2014 POLARIS RZR XP 4 1000 EPS 999
- 2022 POLARIS RZR RS1 999
 2022 POLARIS RZR XP 1000 HIGH LIFTER 999
 2022 POLARIS RZR XP 1000 PREMIUM 999
 2022 POLARIS RZR XP 1000 SPORT 999
 2022 POLARIS RZR XP 1000 TRAILS & ROCKS 999
 2022 POLARIS RZR XP 4 1000 HIGH LIFTER 999
 2022 POLARIS RZR XP 4 1000 PREMIUM 999
 2022 POLARIS RZR XP 4 1000 SPORT 999
 2021 POLARIS RZR RS1 999
 2021 POLARIS RZR TURBO S 925
 2021 POLARIS RZR TURBO S LIFTED LIME LE 925
 2021 POLARIS RZR TURBO S VELOCITY 925
 2021 POLARIS RZR TURBO S4 925
 2021 POLARIS RZR TURBO S4 LIFTED LIME LE 925
 2021 POLARIS RZR TURBO S4 VELOCITY 925
 2021 POLARIS RZR XP 1000 999
 2021 POLARIS RZR XP 1000 HIGH LIFTER EDITION 999
 2021 POLARIS RZR XP 1000 PREMIUM 999
 2021 POLARIS RZR XP 1000 TRAILS & ROCKS 999
 2021 POLARIS RZR XP 4 1000 999
 2021 POLARIS RZR XP 4 1000 HIGH LIFTER EDITION 999
 2021 POLARIS RZR XP 4 1000 PREMIUM 999
 2021 POLARIS RZR XP TURBO 925
 2021 POLARIS RZR XP TURBO S 925
 2020 POLARIS RZR PRO XP 925
 2020 POLARIS RZR PRO XP 4 925
 2020 POLARIS RZR PRO XP 4 ORANGE MADNESS LE 925
 2020 POLARIS RZR PRO XP 4 PREMIUM 925
 2020 POLARIS RZR PRO XP 4 ULTIMATE 925
 2020 POLARIS RZR PRO XP ORANGE MADNESS LE 925
 2020 POLARIS RZR PRO XP PREMIUM 925
 2020 POLARIS RZR PRO XP ULTIMATE 925
 2020 POLARIS RZR RS1 999
 2020 POLARIS RZR XP 1000 999
 2020 POLARIS RZR XP 1000 HIGH LIFTER EDITION 999
 2020 POLARIS RZR XP 1000 LIMITED EDITION 999
 2020 POLARIS RZR XP 1000 PREMIUM 999
 2020 POLARIS RZR XP 1000 TRAILS & ROCK EDITION 999
 2020 POLARIS RZR XP 4 1000 999
 2020 POLARIS RZR XP 4 1000 HIGH LIFTER EDITION 999
 2020 POLARIS RZR XP 4 1000 LIMITED EDITION 999
 2020 POLARIS RZR XP 4 1000 PREMIUM 999
 2020 POLARIS RZR XP 4 TURBO 925
 2020 POLARIS RZR XP 4 TURBO S 925
 2020 POLARIS RZR XP 4 TURBO S VELOCITY 925
 2020 POLARIS RZR XP TURBO 925
 2020 POLARIS RZR XP TURBO EPS 925
 2020 POLARIS RZR XP TURBO S 925
 2020 POLARIS RZR XP TURBO S VELOCITY 925
 2019 POLARIS RZR RS1 999
 2019 POLARIS RZR XP 1000 EPS 999
 2019 POLARIS RZR XP 1000 EPS DYNAMIX EDITION 999

ELEMENTO FILTRO AIRE TECHX2 TX1014 P / RZR XP 4 1000 EPS (ESPONJA)**APLICACIONES****POLARIS**

CONSULTAR TABLA ANTERIOR EPS (1014)
 MISMAS APLICACIONES COMPATIBLES

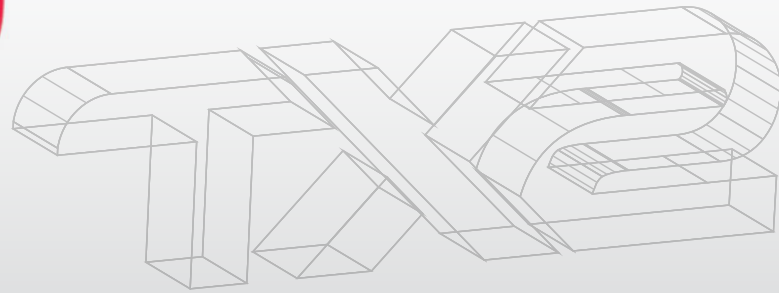


ESPECIFICACIONES

Material: 100% Esponja

APLICACIONES

HONDA MOTORCYCLE
 HONDA CRF 450 X (2005-2017)
 HONDA CRF 450 R (2003-2008)
 HONDA CRF 250 R (2004-2009)
 HONDA CRF 250 X (2004-2018)



APLICACIONES

HONDA MOTORCYCLE
 HONDA TRX 400 RANCHER (2004-2007)
 HONDA TRX 350 RANCHER (2000-2006)*HONDA TRX 400
 RANCHER (2004-2007)
 HONDA TRX 350 RANCHER (2000-2006)*HONDA TRX 400
 RANCHER (2004-2007)
 HONDA TRX 350 RANCHER (2000-2006)

ESPECIFICACIONES

100% ESPONJA



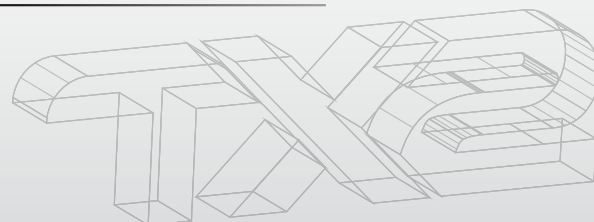
APLICACIONES

YAMAHA MOTORCYCLE

- | | |
|----------------------------|----------------------------|
| YAMAHA YZ 426F (2000-2002) | YAMAHA YZ 450F (2003-2009) |
| YAMAHA WR 426F (2001-2002) | YAMAHA WR 250F (2001-2002) |
| YAMAHA YZ 250F (2001-2013) | YAMAHA YZ 125 (1997-2022) |
| YAMAHA WR 400F (1998-2000) | YAMAHA YZ 250 (1997-2022) |
| YAMAHA YZ 400F (1998-1999) | YAMAHA YZ 250X (2016-2022) |
| YAMAHA YZ 450F (2003-2009) | YAMAHA YZ 125X (2020-2022) |
| YAMAHA WR 250F (2001-2002) | YAMAHA YZ 426F (2000-2002) |
| YAMAHA YZ 125 (1997-2022) | YAMAHA WR 426F (2001-2002) |
| YAMAHA YZ 250 (1997-2022) | YAMAHA YZ 250F (2001-2013) |
| YAMAHA YZ 250X (2016-2022) | YAMAHA WR 400F (1998-2000) |
| YAMAHA YZ 125X (2020-2022) | YAMAHA YZ 400F (1998-1999) |
| YAMAHA YZ 426F (2000-2002) | YAMAHA YZ 450F (2003-2009) |
| YAMAHA WR 426F (2001-2002) | YAMAHA WR 250F (2001-2002) |
| YAMAHA YZ 250F (2001-2013) | YAMAHA YZ 125 (1997-2022) |
| YAMAHA WR 400F (1998-2000) | YAMAHA YZ 250 (1997-2022) |
| YAMAHA YZ 400F (1998-1999) | YAMAHA YZ 250X (2016-2022) |
| | YAMAHA YZ 125X (2020-2022) |

ESPECIFICACIONES

Material: 100% Esponja



APLICACIONES

YAMAHA MOTORCYCLE

- | |
|-----------------------------|
| YAMAHA YZ 250F (2014-2018) |
| YAMAHA YZ 450F (2014-2017) |
| YAMAHA YZ 250FX (2015-2019) |
| YAMAHA YZ 450FX (2017-2018) |
| YAMAHA WR 250F (2015-2019) |
| YAMAHA WR 450F (2016-2018) |
| YAMAHA YZ 250F (2014-2018) |
| YAMAHA YZ 450F (2014-2017) |
| YAMAHA YZ 250FX (2015-2019) |
| YAMAHA YZ 450FX (2017-2018) |
| YAMAHA WR 250F (2015-2019) |
| YAMAHA WR 450F (2016-2018) |
| YAMAHA YZ 250F (2014-2018) |
| YAMAHA YZ 450F (2014-2017) |
| YAMAHA YZ 250FX (2015-2019) |
| YAMAHA YZ 450FX (2017-2018) |
| YAMAHA WR 250F (2015-2019) |
| YAMAHA WR 450F (2016-2018) |

ESPECIFICACIONES

Material: 100% Esponja

**ELEMENTO FILTRO AIRE TECHX2 TX152611 P/ GRIZZLY 350 '07-'14
P/ KODIAK 400 '03-'06, P/ GRIZZLY 450 '07 '14**

132-001057

APLICACIONES

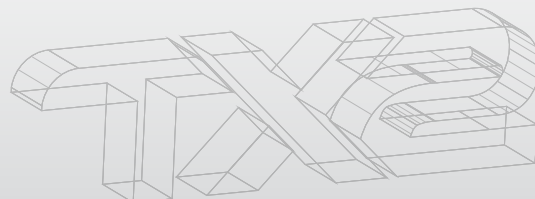
YAMAHA MOTORCYCLE

YAMAHA 400 KODIAK (2003-2006)
YAMAHA 350 GRIZZLY (2007-2014)
YAMAHA 450 GRIZZLY (2007-2014)
YAMAHA GRIZZLY 350 (2007-2014)
YAMAHA GRIZZLY 450 (2007-2014)
YAMAHA 400 GRIZZLY (2007-2008)
YAMAHA 450 WOLVERINE (2006-2010)
YAMAHA 450 WOLVERINE / 4X4 (2006-2010)
YAMAHA 450 KODIAK (2016-2020)
YAMAHA 450 KODIAK (2003-2006)
YAMAHA 450 KODIAK 2/4WD (2003-2006)
YAMAHA 350 BRUIN (2004-2006)



ESPECIFICACIONES

Material: 100% Esponja



**ELEMENTO FILTRO AIRE TECHX2 TX152903 P/ YFM 350 RAPTOR '04-'11
P/ YFM 350 WARRIOR '87-'04, P/ GRIZZLY 660 '02-'09**

132-001051

APLICACIONES

YAMAHA MOTORCYCLE

YAMAHA YFM 350 RAPTOR (2004-2013)
YAMAHA 350 WOLVERINE (1995-2009)
YAMAHA WOLVERINE 350 (1996-1996)
YAMAHA YFM 350 WARRIOR (1987-2004)
YAMAHA 600 GRIZZLY (1998-2001)
YAMAHA YFM 600 GRIZZLY (1998-2001)
YAMAHA 660 GRIZZLY (2002-2009)



ESPECIFICACIONES

Material: 100% Esponja





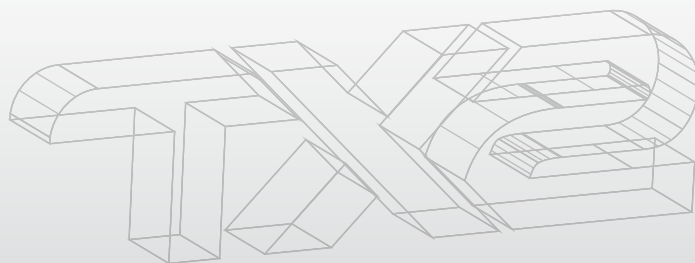
APLICACIONES

SUZUKI MOTORCYCLE

- SUZUKI 400 EIGER / 400 KING QUAD (2002-2020)
- SUZUKI 400 KING QUAD (2002-2018)
- SUZUKI LTA 500F VINSON (2002-2007)
- SUZUKI VINSON 500 (2002-2010)
- SUZUKI LT-Z 400 (2003-2013)
- SUZUKI LTZ 400 (2003-2013)
- SUZUKI EIGER 400 (2002-2008)
- ARCTIC CAT DVX 400 (2003-2008)
- ARCTIC CAT KING QUAD 400 (2010-2017)

ESPECIFICACIONES

Material: 100% Esponja



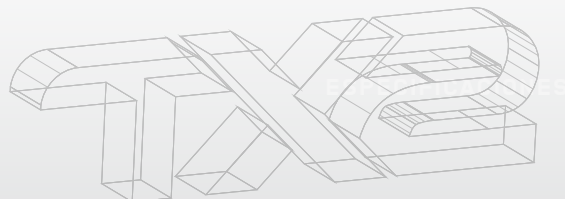
APLICACIONES

KTM MOTORCYCLE

- KTM 50 SX (2000-2008)

ESPECIFICACIONES

Material: 100% Esponja





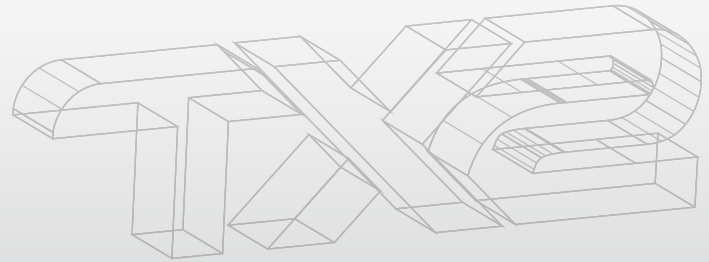
APLICACIONES

VARIAS MARCAS

HUSQVARNA TC 50 (2017-2022)
KTM 50 SX (2009-2022)
GASGAS MC 50 (2021-2022)

ESPECIFICACIONES

Material: 100% Esponja



APLICACIONES

KTM MOTORCYCLE

KTM 525 LC-4 (2003-2003)
KTM 520 LC-4 (2000-2002)
KTM 125 SX (1998-2003)
KTM 125 EXC (1998-2003)
KTM 300 EXC (1998-2003)
KTM 300 XC-W (1998-2003)
KTM 250 SX (1998-2003)
KTM 250 XC (1998-2003)
KTM 85 SX (2004-2004)
KTM 380 (1998-2003)
KTM 200 EXC (1998-2003)
KTM 200 XC-W (1998-2003)
KTM 250 EXC (1998-2003)
KTM 250 XC-W (1998-2003)

ESPECIFICACIONES

Material: 100% Esponja



ESPECIFICACIONES

Material: 100% Esponja

APLICACIONES

KTM MOTORCYCLE

- KTM 560 SMR (2006-2007)
- KTM 625 / 660 SMC (2008-2010)
- KTM 530 EXC (2006-2007)
- KTM 450 EXC (2003-2006)
- KTM 450 EXC-F (2003-2006)
- KTM 450 XC-W (2003-2006)
- KTM 500/525/530 EXC-F (03-06)
- KTM 525 LC-4 (2003-2006)
- KTM 520 LC-4 (2001-2002)
- KTM 250 SX-F (2006-2006)
- KTM 250 XC-F (2006-2006)
- KTM 250 EXC-F (2006-2006)
- KTM 450 SX-F (2003-2006)
- KTM 450 XC-F (2003-2006)
- KTM 250 XCF-W (2006-2006)
- KTM 125 SX (2004-2006)
- KTM 125 EXC (2004-2007)
- KTM 300 EXC (2004-2007)
- KTM 300 XC-W (2004-2007)
- KTM 250 SX (2004-2006)
- KTM 250 XC (2004-2006)
- KTM 85 SX (2005-2012)
- KTM 250 EXC (2004-2007)
- KTM 250 XC-W (2004-2006)



ESPECIFICACIONES

Material: 100% Esponja

APLICACIONES

KTM MOTORCYCLE

- KTM 560 SMR (2010-2010)
- TM 450 EXC-F (2011-2016)
- KTM 500/525/530 EXC-F (08-11)
- KTM 250 XC-F (2010-2010)
- KTM 450 SX-F (2010-2010)
- KTM 250 XCF-W (2010-2011)
- KTM 125 SX (2010-2010)
- KTM 300 EXC (2010-2011)
- KTM 250 SX (2010-2010)
- KTM 200 EXC (2010-2011)
- KTM 250 EXC (2010-2011)
- KTM 200 XC (2010-2010)
- KTM 525 XC (2010-2013)
- KTM 150 XC (2010-2010)

KTM MOTORCYCLE

- KTM 525 XC ATV (2010-2013)
- KTM 530 XC-W (2010-2011)
- KTM 450 SMR (2010-2010)
- KTM 450 EXC (2011-2016)
- KTM 450 XC-W (2011-2016)
- KTM 250 SX-F (2010-2010)
- KTM 250 EXC-F (2010-2011)
- KTM 450 XC-F (2010-2010)
- KTM 505 XC-F (2010-2010)
- KTM 125 EXC (2010-2011)
- KTM 300 XC-W (2010-2011)
- KTM 250 XC (2010-2010)
- KTM 200 XC-W (2010-2011)
- KTM 250 XC-W (2010-2011)
- KTM 450 SX ATV (2010-2011)
- KTM 150 SX (2010-2010)
- KTM 505 SX ATV (2010-2013)
- KTM 450 XC ATV (2010-2011)
- KTM 530 EXC-F (2010-2011)

HUSABERG MOTORCYCLE

- HUSABERG TE 125 (2011-2012)
- HUSABERG TE 300 (2011-2012)
- HUSABERG TE 250 (2011-2012)

ELEMENTO FILTRO AIRE TECHX2 TX154115 P / KTM 250 SXF/XC-F '11-'15 P / KTM 450 EXC/XCF-W '11-'16, P / HUSQVARNA TC 250 '14-'15

132-001046



Material: 100% Esponja

APLICACIONES

KTM MOTORCYCLE

KTM 450 EXC (2011-2016)
KTM 450 EXC-F (2011-2016)
KTM 450 XC-W (2011-2016)
KTM 500/525/530 EXC-F (12-16)
KTM 350 SX-F (2011-2015)
KTM 350 XC-F (2011-2015)
KTM 350 EXC-F (2011-2016)
KTM 250 SX-F (2011-2015)
KTM 250 XC-F (2011-2015)
KTM 250 EXC-F (2012-2016)
KTM 450 SX-F (2011-2015)
KTM 450 XC-F (2011-2015)
KTM 350 XCF-W (2011-2016)
KTM 250 XCF-W (2012-2016)
KTM 125 SX (2011-2015)
KTM 125 EXC (2012-2016)
KTM 300 EXC (2012-2016)
KTM 300 XC-W (2012-2016)
KTM 250 SX (2011-2016)
KTM 250 XC (2011-2016)
KTM 85 SX (2013-2017)
KTM 200 EXC (2012-2016)
KTM 200 XC-W (2012-2016)
KTM 250 EXC (2012-2016)
KTM 250 XC-W (2012-2016)
KTM 150 SX (2011-2015)
KTM 150 XC (2011-2015)
KTM 300 XC (2011-2016)

HUSQVARNA MOTORCYCLE

HUSQVARNA FE 350 (2013-2016)
HUSQVARNA FC 350 (2013-2015)
HUSQVARNA FE 250 (2014-2016)
HUSQVARNA FC 450 (2014-2015)
HUSQVARNA FS 450 (2014-2015)
HUSQVARNA FE 450 (2013-2016)
HUSQVARNA FE 501 (2014-2016)
HUSQVARNA FC 250 (2014-2015)
HUSQVARNA TC 85 (2014-2017)
HUSQVARNA TE 125 (2014-2016)
HUSQVARNA TE 250 (2014-2016)
HUSQVARNA TE 300 (2014-2016)
HUSQVARNA TC 125 (2014-2015)
HUSQVARNA TC 250 (2014-2015)

HUSABERG MOTORCYCLE

HUSABERG FE 450 (2013-2013)
HUSABERG FE 501 (2013-2013)
HUSABERG TE 125 (2013-2013)
HUSABERG TE 250 (2013-2013)
HUSABERG TE 300 (2013-2013)
HUSABERG FE 250 (2013-2013)
HUSABERG FE 350 (2013-2013)

ELEMENTO FILTRO AIRE TECHX2 TX154116 P / KTM 450 EXC- '17-'21, P / KTM XC-F '16-'21, P / KTM 125 SX '16-'21

132-001049



ESPECIFICACIONES

Material: 100% Esponja

APLICACIONES

HUSQVARNA MOTORCYCLE

HUSQVARNA FE 350 (2017-2022)
HUSQVARNA FC 350 (2016-2022)
HUSQVARNA FE 250 (2017-2022)
HUSQVARNA FC 450 (2016-2022)
HUSQVARNA FS 450 (2016-2022)
HUSQVARNA FE 450 (2017-2022)
HUSQVARNA FE 501 (2017-2022)
HUSQVARNA FX 350 (2019-2022)
HUSQVARNA FX 450 (2017-2022)
HUSQVARNA FC 250 (2016-2022)
HUSQVARNA TE 350 (2017-2022)
HUSQVARNA TE 125 (2017-2022)
HUSQVARNA TE 250 (2017-2022)
HUSQVARNA TE 300 (2017-2022)
HUSQVARNA TC 125 (2016-2022)
HUSQVARNA TC 250 (2016-2022)
HUSQVARNA TE 150 (2017-2022)
HUSQVARNA TX 125 (2017-2022)
HUSQVARNA TX 300 (2017-2022)
HUSQVARNA TE 250I (2018-2022)
HUSQVARNA TE 300I (2018-2022)
HUSQVARNA TX 300I (2018-2022)

KTM MOTORCYCLE

KTM 350 SX-F (2016-2022)
KTM 250 SX-F (2016-2022)
KTM 250 XC-F (2016-2022)
KTM 250 EXC-F (2017-2022)
KTM 250 XCF-W (2017-2022)
KTM 125 SX (2016-2022)
KTM 125 EXC (2017-2022)
KTM 300 EXC (2017-2022)
KTM 300 XC-W (2017-2022)
KTM 250 SX (2017-2022)
KTM 250 XC (2017-2022)
KTM 250 EXC (2017-2022)
KTM 250 XC-W (2017-2022)
KTM 150 SX (2016-2022)
KTM 300 XC (2019-2022)
KTM 125 XC (2017-2022)
KTM 150 XC-W (2017-2022)
KTM 250 EXC TPI (2018-2022)
KTM 250 XC-W TPI (2019-2022)
KTM 300 EXC TPI (2019-2022)
KTM 300 XC-W TPI (2019-2022)

GASGAS MOTORCYCLE

GasGas EC 250F (2021-2022)
GasGas EC 350F (2021-2022)
GasGas EX 250F (2021-2022)
GasGas EX 350F (2021-2022)
GasGas EX 450F (2021-2022)
GasGas MC 250F (2021-2022)
GasGas MC 450F (2021-2022)



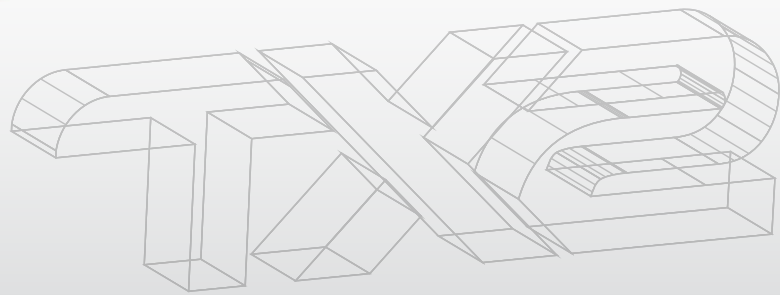
APLICACIONES

VARIOS MODELOS

Husqvarna TC 85 (2018-2022)
KTM 85 SX (2018-2022)
GasGas MC 85 (2021-2022)

ESPECIFICACIONES

Material: 100% Esponja



APLICACIONES

KTM MOTORCYCLE

KTM 450 EXC (2011-2016)
KTM 450 XC-W (2011-2016)
KTM 500/525/530 EXC-F (2012-2016)
KTM 350 SX-F (2011-2015)
KTM 350 XC-F (2011-2015)
KTM 350 EXC-F (2011-2016)
KTM 250 SX-F (2011-2015)
KTM 250 XC-F (2011-2015)
KTM 250 EXC-F (2012-2015)
KTM 450 SX-F (2011-2015)
KTM 450 XC-F (2011-2015)
KTM 350 XCF-W (2011-2016)
KTM 250 XCF-W (2012-2015)

HUSQVARNA MOTORCYCLE

HUSQVARNA FE 350 (2013-2016)
HUSQVARNA FC 350 (2013-2015)
HUSQVARNA FE 250 (2014-2016)
HUSQVARNA FC 450 (2014-2015)
HUSQVARNA FS 450 (2014-2015)
HUSQVARNA FE 450 (2013-2016)
HUSQVARNA FE 501 (2014-2016)
HUSQVARNA FC 250 (2014-2015)

ESPECIFICACIONES

Material: 100% Esponja



ESPECIFICACIONES

Material: 100% Esponja

APLICACIONES

HUSQVARNA MOTORCYCLE

HUSQVARNA TC 85 (2014-2017)
 HUSQVARNA TE 125 (2014-2016)
 HUSQVARNA TE 250 (2014-2016)
 HUSQVARNA TE 300 (2014-2016)
 HUSQVARNA TC 125 (2014-2015)
 HUSQVARNA TC 250 (2014-2015)

KTM MOTORCYCLE

KTM 125 SX (2011-2015)
 KTM 125 EXC (2012-2016)
 KTM 300 EXC (2012-2016)
 KTM 300 XC-W (2012-2016)
 KTM 250 SX (2011-2016)
 KTM 250 XC (2011-2016)
 KTM 85 SX (2013-2017)
 KTM 200 EXC (2011-2016)
 KTM 200 XC-W (2011-2016)
 KTM 250 EXC (2012-2016)
 KTM 250 XC-W (2012-2016)
 KTM 150 SX (2011-2015)
 KTM 150 XC (2011-2015)



ESPECIFICACIONES

Material: 100% Esponja

APLICACIONES

HUSQVARNA MOTORCYCLE

HUSQVARNA TE 350 (2017-2018)
 HUSQVARNA TE 250 (2017-2018)
 HUSQVARNA TE 300 (2017-2018)
 HUSQVARNA TC 125 (2016-2018)
 HUSQVARNA TC 250 (2016-2018)
 HUSQVARNA TE 150 (2017-2018)
 HUSQVARNA TX 125 (2017-2018)
 HUSQVARNA TX 300 (2017-2018)
 HUSQVARNA TE 250I (2018-2018)
 HUSQVARNA TE 300I (2018-2018)

KTM MOTORCYCLE

KTM 125 SX (2016-2018)
 KTM 125 EXC (2017-2018)
 KTM 300 EXC (2017-2018)
 KTM 300 XC-W (2017-2018)
 KTM 250 SX (2017-2018)
 KTM 250 XC (2017-2018)
 KTM 250 EXC (2017-2018)
 KTM 250 XC-W (2017-2018)
 KTM 150 SX (2016-2018)
 KTM 150 XC (2016-2018)
 KTM 150 XC-W (2016-2018)
 KTM 250 EXC TPI (2018-2018)

ELEMENTO FILTRO AIRE TECHX2 TX154514 P / KTM 60 SX '98-'00 P / KTM 65 SX '97-'21, P / KTM 400 LC-4 DUKE '97 '04

132-001055



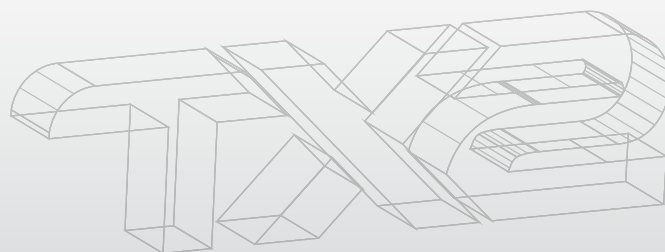
APLICACIONES

VARIOS MODELOS

HUSQVARNA TC 65 (2017-2022)
KTM 640 LC4 (1998-2006)
KTM 65 SX (1997-2022)
KTM 640 LC-4 DUKE (1999-2010)
KTM 625 SMC (2003-2007)
KTM 625 SXC (2003-2007)
KTM 620 / 625 LC-4 DUKE (97-06)
KTM 640 ADVENTURE (1998-2006)
KTM 400 LC-4 DUKE (1997-2004)
KTM 60 SX (1998-2000)
KTM 640 DUKE-E (1998-1998)
GASGAS MC 65 (2021-2022)

ESPECIFICACIONES

Material: 100% Esponja



ELEMENTO FILTRO AIRE TECHX2 TX154219 P / SX250 '17-'18, XC-250 '17-'18, P / XC-W 300 '17-'18

132-001026



APLICACIONES

YAMAHA MOTORCYCLE

2023 YAMAHA YZF R3 321
2023 YAMAHA YZF R3 321
2022 YAMAHA YZF R3 321
2022 YAMAHA YZF R3 WGP 60TH 321
2021 YAMAHA MT-03 321
2021 YAMAHA YZF R3 321
2021 YAMAHA YZF R3 ME MOTOGP 321
2020 YAMAHA MT-03 321
2020 YAMAHA YZF R3 321
2020 YAMAHA YZF R3 ME MOTOGP 321
2019 YAMAHA YZF R3 321
2019 YAMAHA YZF R3 ABS 321
2018 YAMAHA MT-03 321
2018 YAMAHA YZF R3 321
2018 YAMAHA YZF R3 ABS 321
2017 YAMAHA MT-03 321
2017 YAMAHA YZF R25 250
2017 YAMAHA YZF R3 321
2017 YAMAHA YZF R3 ABS 321
2016 YAMAHA MT-03 321
2016 YAMAHA YZF R25 250
2016 YAMAHA YZF R3 321
2015 YAMAHA YZF R25 250
2015 YAMAHA YZF R3 321

SUZUKI MOTORCYCLE

2023 SUZUKI GSXR125 124
2023 SUZUKI GSXS125 124
2021 SUZUKI GSXR125 124
2021 SUZUKI GSXR125 RZ 124
2021 SUZUKI GSXS125 124
2020 SUZUKI GSXR125 124
2020 SUZUKI GSXR125 RZ 124
2020 SUZUKI GSXS125 124
2019 SUZUKI GSXR125 124
2019 SUZUKI GSXS125 124
2018 SUZUKI GSXR125 124
2018 SUZUKI GSXR150 150
2018 SUZUKI GSXR150 GP 150
2018 SUZUKI GSXS125 124
2018 SUZUKI GSXS150 147
2018 SUZUKI GSXS150 GP 147
2017 SUZUKI GSXR125 124
2017 SUZUKI GSXR150 150
2017 SUZUKI GSXS125 124
2017 SUZUKI GSXS150 147

ESPECIFICACIONES

Forma del filtro de aire: Panel
Material del filtro de aire: Gasa de algodón
Lavable: Sí
Altura: 1,5 pulgadas (38 mm)
Longitud exterior: 5,938 pulg. (151 mm)
Ancho exterior: 4,438 in (113 mm)
Estilo del producto: Panel
Bridas: Ninguno
Peso: 0,7 libras (0,3 kg)
Cantidad de relubricación del filtro: 0,36 oz (11 ml)

ELEMENTO FILTRO AIRE TECHX2 TX4508 P/ DS-450 EFI

132-001033



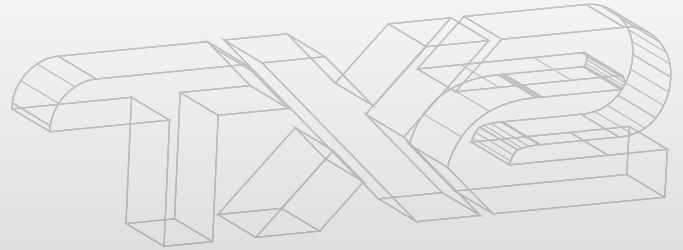
APLICACIONES

CAN-AM

DS450 (2008-2014)
 DS450 EFI (2009-2012)
 DS450 EFI X mx (2009-2013)
 DS450 EFI X xc (2009-2012)
 DS450 X mx (2013-2015)
 DS450 X xc (2014-2015)
 DS450X (2008)

ESPECIFICACIONES

Peso: 430 g
 Dimensiones: 17.78 X 11.43 X 11.43 cm



ELEMENTO FILTRO AIRE TECHX2 TX8006 P/ F800S '06-'11, P/ F800GS ADVENTURE '14-'18

132-001040



ESPECIFICACIONES

Forma del filtro de aire: Panel
 Material del filtro de aire: Gasa de algodón
 Altura: 1,438 pulgadas (37 mm)
 Longitud exterior: 6 in (152 mm)
 Ancho exterior: 3,625 in (92 mm)
 Estilo del producto: Filtro de aire del panel
 Peso: 0,6 libras (0,3 kg)
 Cantidad de relubricación: 0,34 oz (10 ml)

APLICACIONES

BMW MOTORCYCLE

2019 BMW F800GT 798	2012 BMW F800GS 798
2019 BMW F800R 798	2012 BMW F800R 798
2018 BMW F800GS 798	2012 BMW F800ST 798
2018 BMW F800GS ADVENTURE 798	2012 HUSQVARNA NUDA 900 898
2018 BMW F800GT 798	2012 HUSQVARNA NUDA 900R 898
2018 BMW F800R 798	2011 BMW F650GS 798
2017 BMW F700GS 798	2011 BMW F800GS 798
2017 BMW F800GS 798	2011 BMW F800R 798
2017 BMW F800GS ADVENTURE 798	2011 BMW F800S 798
2017 BMW F800GT 798	2011 BMW F800ST 798
2017 BMW F800R 798	2010 BMW F650GS 798
2016 BMW F700GS 798	2010 BMW F800GS 798
2016 BMW F800GS 798	2010 BMW F800R 798
2016 BMW F800GS ADVENTURE 798	2010 BMW F800S 798
2016 BMW F800GT 798	2010 BMW F800ST 798
2016 BMW F800R 798	2009 BMW F650GS 652
2015 BMW F700GS 798	2009 BMW F800GS 798
2015 BMW F800GS 798	2009 BMW F800R 798
2015 BMW F800GS ADVENTURE 798	2009 BMW F800S 798
2015 BMW F800GT 798	2009 BMW F800ST 798
2015 BMW F800R 798	2008 BMW F650GS 652
2014 BMW F700GS 798	2008 BMW F800GS 798
2014 BMW F800GS 798	2008 BMW F800S 798
2014 BMW F800GS ADVENTURE 798	2008 BMW F800ST 798
2014 BMW F800GT 798	2007 BMW F800GS 798
2014 BMW F800R 798	2007 BMW F800S 798
2013 BMW F700GS 798	2007 BMW F800ST 798
2013 BMW F800GS 798	2006 BMW F800S 798
2013 BMW F800GT 798	2006 BMW F800ST 798
2013 BMW F800R 798	
2012 BMW F650GS 798	



ESPECIFICACIONES

Forma de filtro de aire: Panel
 Material del filtro de aire: Gasa de algodón
 Lavable: Sí
 Altura: 1,438 pulgadas (37 mm)
 Longitud exterior: 6 in (152 mm)
 Ancho exterior: 3,625 in (92 mm)
 Estilo de producto: Filtro de aire de panel
 Peso: 0,6 libras (0,3 kg)
 Cantidad de relubricación: 0,34 oz (10 ml)

APLICACIONES

- BMW MOTORCYCLE**
- 2019 BMW F800GT 798
 - 2019 BMW F800R 798
 - 2018 BMW F800GS 798
 - 2018 BMW F800GS Adventure 798
 - 2018 BMW F800GT 798
 - 2018 BMW F800R 798
 - 2017 BMW F700GS 798
 - 2017 BMW F800GS 798
 - 2017 BMW F800GS Adventure 798
 - 2017 BMW F800GT 798
 - 2017 BMW F800R 798
 - 2016 BMW F700GS 798
 - 2016 BMW F800GS 798
 - 2016 BMW F800GS Adventure 798
 - 2016 BMW F800GT 798
 - 2016 BMW F800R 798
 - 2015 BMW F700GS 798
 - 2015 BMW F800GS 798
 - 2015 BMW F800GS Adventure 798
 - 2015 BMW F800GT 798
 - 2015 BMW F800R 798
 - 2014 BMW F700GS 798
 - 2014 BMW F800GS 798
 - 2014 BMW F800GS Adventure 798
 - 2014 BMW F800GT 798
 - 2014 BMW F800R 798
 - 2013 BMW F700GS 798
 - 2013 BMW F800GS 798
 - 2013 BMW F800GT 798
 - 2013 BMW F800R 798
- HUSQVARNA MOTORCYCLE**
- 2012 BMW F650GS 798
 - 2012 BMW F800GS 798
 - 2012 BMW F800R 798
 - 2012 BMW F800ST 798
 - 2011 BMW F650GS 798
 - 2011 BMW F800GS 798
 - 2011 BMW F800R 798
 - 2011 BMW F800S 798
 - 2011 BMW F800ST 798
 - 2010 BMW F650GS 798
 - 2010 BMW F800GS 798
 - 2010 BMW F800R 798
 - 2010 BMW F800S 798
 - 2010 BMW F800ST 798
 - 2009 BMW F650GS 652
 - 2009 BMW F800GS 798
 - 2009 BMW F800R 798
 - 2009 BMW F800S 798
 - 2009 BMW F800ST 798
 - 2008 BMW F650GS 652
 - 2008 BMW F800GS 798
 - 2008 BMW F800S 798
 - 2008 BMW F800ST 798
 - 2007 BMW F800GS 798
 - 2007 BMW F800S 798
 - 2007 BMW F800ST 798
 - 2006 BMW F800S 798
 - 2006 BMW F800ST 798
- HUSQVARNA NUDA**
- 2012 HUSQVARNA NUDA 900 898
 - 2012 HUSQVARNA NUDA 900R 898

ELEMENTO FILTRO AIRE TECHX2 TX8007 P / RZR 800



ESPECIFICACIONES

Forma del filtro de aire: Redondo Recto
 Altura: 7,25 pulgadas (184 mm)
 Lavable: Sí
 Material del filtro de aire: Gasa de algodón
 Estilo del producto: Filtro de aire universal
 Diámetro interior de brida: 2,5 in (64 mm)
 Longitud de la brida: 0,625 in (16 mm)
 Tipo de brida: Centrada
 Bridas: 1
 Estilo superior: Caucho
 Material superior: Ninguno
 Diámetro exterior: 5 in (127 mm)
 Diámetro interior: 2,5 pulg. (64 mm)
 Peso: 1,4 libras (0,6 kg)

APLICACIONES

- POLARIS**
- 2017 POLARIS RANGER 6X6 800 760
 - 2016 POLARIS RANGER 6X6 800 760
 - 2015 POLARIS RANGER 6X6 800 760
 - 2014 POLARIS RANGER 6X6 800 760
 - 2014 POLARIS RANGER 800 EFI 760
 - 2014 POLARIS RANGER 800 EFI EPS LE 760
 - 2014 POLARIS RANGER 800 EFI MID-SIZE 760
 - 2014 POLARIS RANGER 800 EFI MID-S LE 760
 - 2014 POLARIS RANGER CREW 800 760
 - 2014 POLARIS RANGER CREW DIESEL 904
 - 2014 POLARIS RANGER DIESEL 904
 - 2014 POLARIS RANGER RZR 800 760
 - 2014 POLARIS RANGER RZR 800 EPS LE 760
 - 2014 POLARIS RANGER RZR 800 S 760
 - 2014 POLARIS RANGER RZR S 800 EPS LE 760
 - 2014 POLARIS RZR 4 800 EPS LE 760
 - 2014 POLARIS RZR 800 760
 - 2014 POLARIS RZR 800 EPS LE 760
 - 2014 POLARIS RZR 800 XC EDITION 760
 - 2014 POLARIS RZR S 800 760
 - 2014 POLARIS RZR S 800 EPS LE 760
 - 2013 POLARIS RANGER 6X6 800 760
 - 2013 POLARIS RANGER 800 EFI 760
 - 2013 POLARIS RANGER 800 EFI EPS 760
 - 2013 POLARIS RANGER 800 EFI EPS LE 760
 - 2013 POLARIS RANGER 800 EFI MID-SIZE 760
 - 2013 POLARIS RANGER 800 EFI MID-SIZE 760
 - 2013 POLARIS RANGER CREW 800 760
 - 2013 POLARIS RANGER CREW 800 EPS 760
 - 2013 POLARIS RANGER CREW DIESEL 904
 - 2013 POLARIS RANGER DIESEL 904
 - 2013 POLARIS RANGER RZR 4 800 760
 - 2013 POLARIS RANGER RZR 4 800 EPS LE 760
 - 2013 POLARIS RANGER RZR 800 760
 - 2013 POLARIS RANGER RZR 800 EPS LE 760
 - 2013 POLARIS RANGER RZR 800 LE 760
 - 2013 POLARIS RANGER RZR 800 S 760
 - 2013 POLARIS RANGER RZR 800 S LE 760
 - 2013 POLARIS RANGER RZR S 800 EPS LE 760
 - 2012 POLARIS RANGER 6X6 800 760
 - 2012 POLARIS RANGER 800 XP EPS 760
 - 2012 POLARIS RANGER 800 XP EPS LE 760
 - 2012 POLARIS RANGER 800 XP LE 760
 - 2012 POLARIS RANGER CREW 800 760
 - 2012 POLARIS RANGER CREW 800 EPS 760
 - 2012 POLARIS RANGER CREW DIESEL 904
 - 2012 POLARIS RANGER DIESEL 904
 - 2012 POLARIS RANGER RZR 4 800 760
 - 2012 POLARIS RANGER RZR 4 800 EPS ROB G ED 760
 - 2012 POLARIS RANGER RZR 4 800 GOR ED 760
 - 2012 POLARIS RANGER RZR 800 760
 - 2012 POLARIS RANGER RZR 800 EPS LE 760
 - 2012 POLARIS RANGER RZR 800 LE 760
 - 2012 POLARIS RANGER RZR 800 S 760
 - 2012 POLARIS RANGER RZR 800 S LE 760
 - 2012 POLARIS RANGER RZR S 800 EPS LE 760
 - 2012 POLARIS RANGER RZR S MILITARY 760
 - 2011 POLARIS RANGER 6X6 800 760
 - 2011 POLARIS RANGER 800 XP 760
 - 2011 POLARIS RANGER 800 XP EPS 760
 - 2011 POLARIS RANGER CREW 800 760
 - 2011 POLARIS RANGER CREW 800 EPS 760
 - 2011 POLARIS RANGER CREW DIESEL 904
 - 2011 POLARIS RANGER RZR 4 800 760
 - 2011 POLARIS RANGER RZR 4 800 EPS ROBBY GORDON EDITION 760
 - 2011 POLARIS RANGER RZR 4 800 GORDON EDITION 760
 - 2011 POLARIS RANGER RZR 4 ROBBY GORDON EDITION 760
 - 2011 POLARIS RANGER RZR 800 760
 - 2011 POLARIS RANGER RZR 800 SW MILITARY 760
 - 2011 POLARIS RANGER RZR S 760
 - 2010 POLARIS RANGER RZR 4 800 760
 - 2010 POLARIS RANGER RZR 4 800 GORDON EDITION 760
 - 2010 POLARIS RANGER RZR 800 760
 - 2010 POLARIS RANGER RZR S 760
 - 2009 POLARIS RANGER RZR 800 760
 - 2009 POLARIS RANGER RZR S 760
 - 2009 POLARIS RANGER RZR S 760
 - 2008 POLARIS RANGER RZR 800 760



ESPECIFICACIONES

Forma de filtro de aire: Panel
 Material del filtro de aire: Gasa de algodón
 Lavable: Sí
 Altura: 1,063 pulgadas (27 mm)
 Longitud exterior: 13 in (330 mm)
 Ancho exterior: 10,5 pulg. (267 mm)
 Contenido del paquete: 1 filtro de aire
 Estilo de producto: Filtro de aire de panel
 Peso: 1,6 libras (0,7 kg)
 Cantidad de relubricación: 1,88 oz (56 ml)

APLICACIONES

CAN-AM

- 2020 CAN-AM COMMANDER 1000 XT-P 976
- 2020 CAN-AM COMMANDER 1000R DPS 976
- 2020 CAN-AM COMMANDER 1000R LTD 976
- 2020 CAN-AM COMMANDER 1000R XT 976
- 2020 CAN-AM COMMANDER 800R 800
- 2020 CAN-AM COMMANDER 800R DPS 800
- 2020 CAN-AM COMMANDER 800R XT 800
- 2020 CAN-AM COMMANDER MAX 1000 DPS 976
- 2020 CAN-AM COMMANDER MAX 1000R LTD 976
- 2020 CAN-AM COMMANDER MAX 1000R XT 976
- 2020 CAN-AM COMMANDER MAX 800R DPS 800
- 2019 CAN-AM COMMANDER 1000 XT-P 976
- 2019 CAN-AM COMMANDER 1000R DPS 976
- 2019 CAN-AM COMMANDER 1000R LTD 976
- 2019 CAN-AM COMMANDER 1000R XT 976
- 2019 CAN-AM COMMANDER 800R 800
- 2019 CAN-AM COMMANDER 800R DPS 800
- 2019 CAN-AM COMMANDER 800R XT 800
- 2019 CAN-AM COMMANDER MAX 1000 DPS 976
- 2019 CAN-AM COMMANDER MAX 1000R LTD 976
- 2019 CAN-AM COMMANDER MAX 1000R XT 976
- 2019 CAN-AM COMMANDER MAX 800R DPS 800
- 2018 CAN-AM COMMANDER 1000R DPS 976
- 2018 CAN-AM COMMANDER 1000R MOSSY OAK H ED. 976
- 2018 CAN-AM COMMANDER 1000R XT 976
- 2018 CAN-AM COMMANDER 800R 800
- 2018 CAN-AM COMMANDER 800R DPS 800
- 2018 CAN-AM COMMANDER 800R XT 800
- 2018 CAN-AM COMMANDER MAX 1000 DPS 976
- 2018 CAN-AM COMMANDER MAX 1000R LTD 976
- 2018 CAN-AM COMMANDER MAX 1000R XT 976
- 2018 CAN-AM COMMANDER MAX 800R DPS 800
- 2018 CAN-AM MAVERICK 1000R DPS 976
- 2018 CAN-AM MAVERICK 1000R X MR 976
- 2018 CAN-AM MAVERICK 1000R X XC 976
- 2018 CAN-AM MAVERICK 1000R X XC DPS 976
- 2018 CAN-AM MAVERICK MAX 1000R DPS 976
- 2018 CAN-AM MAVERICK MAX 1000R X MR 976
- 2017 CAN-AM COMMANDER 1000 DPS 976
- 2017 CAN-AM COMMANDER 1000 LTD 976
- 2017 CAN-AM COMMANDER 1000 XT 976
- 2017 CAN-AM COMMANDER 1000 MOSSY OAK H ED 976
- 2017 CAN-AM COMMANDER 1000 XT 976
- 2017 CAN-AM COMMANDER 1000 XT-P 976
- 2017 CAN-AM COMMANDER 800R 800
- 2017 CAN-AM COMMANDER 800R DPS 800
- 2017 CAN-AM COMMANDER 800R XT 800
- 2017 CAN-AM COMMANDER MAX 1000 DPS 976
- 2017 CAN-AM COMMANDER MAX 1000 LTD 976
- 2017 CAN-AM COMMANDER MAX 1000R LTD 976
- 2017 CAN-AM COMMANDER MAX 1000R XT 976
- 2017 CAN-AM COMMANDER MAX 800R DPS 800
- 2017 CAN-AM MAVERICK 1000R DPS 976
- 2017 CAN-AM MAVERICK 1000R X XC 976
- 2017 CAN-AM MAVERICK 1000R XC 976
- 2017 CAN-AM MAVERICK MAX 1000R DPS 976
- 2017 CAN-AM MAVERICK MAX 1000R X MR 976
- 2016 CAN-AM COMMANDER 1000 DPS 976
- 2016 CAN-AM COMMANDER 1000 LTD 976
- 2016 CAN-AM COMMANDER 1000 MOSSY OAK H ED 976
- 2016 CAN-AM COMMANDER 1000 XT 976
- 2016 CAN-AM COMMANDER 1000 XT-P 976
- 2016 CAN-AM COMMANDER 800R 800
- 2016 CAN-AM COMMANDER 800R DPS 800
- 2016 CAN-AM COMMANDER 800R XT 800
- 2016 CAN-AM COMMANDER MAX 1000 DPS 976
- 2016 CAN-AM COMMANDER MAX 1000 LTD 976
- 2016 CAN-AM COMMANDER MAX 1000R XT 976
- 2016 CAN-AM MAVERICK 1000R 976
- 2016 CAN-AM MAVERICK 1000R DPS 976
- 2016 CAN-AM MAVERICK 1000R X DS 976
- 2016 CAN-AM MAVERICK 1000R X MR DPS 976
- 2016 CAN-AM MAVERICK 1000R X XC DPS 976
- 2016 CAN-AM MAVERICK 1000R XC 976
- 2016 CAN-AM MAVERICK MAX 1000R 976
- 2016 CAN-AM MAVERICK MAX 1000R DPS 976
- 2016 CAN-AM MAVERICK MAX 1000R X DS 976
- 2015 CAN-AM COMMANDER 1000 DPS 976
- 2015 CAN-AM COMMANDER 1000 LTD 976
- 2015 CAN-AM COMMANDER 1000R 800
- 2015 CAN-AM COMMANDER 1000R DPS 800
- 2015 CAN-AM COMMANDER 800R 800
- 2015 CAN-AM COMMANDER 800R DPS 800
- 2015 CAN-AM COMMANDER 800R XT 800
- 2015 CAN-AM COMMANDER MAX 1000 DPS 976
- 2015 CAN-AM COMMANDER MAX 1000 LTD 976
- 2015 CAN-AM COMMANDER MAX 1000R 976
- 2015 CAN-AM COMMANDER MAX 1000R X DS 976 EXC TURBO
- 2015 CAN-AM COMMANDER MAX 1000R X RS DPS 976
- 2015 CAN-AM MAVERICK 1000R X XC DPS 976
- 2015 CAN-AM MAVERICK MAX 1000R 976
- 2015 CAN-AM MAVERICK MAX 1000R X DS 976 EXC TURBO
- 2015 CAN-AM MAVERICK MAX 1000R X RS DPS 976
- 2014 CAN-AM COMMANDER 1000 976
- 2014 CAN-AM COMMANDER 1000 DPS 976
- 2014 CAN-AM COMMANDER 1000 LTD 976
- 2014 CAN-AM COMMANDER 1000 XT 976
- 2014 CAN-AM COMMANDER 1000 XT-P 976
- 2014 CAN-AM COMMANDER 800R 800
- 2014 CAN-AM COMMANDER 800R DPS 800
- 2014 CAN-AM COMMANDER 800R XT 800
- 2014 CAN-AM COMMANDER MAX 1000 DPS 976
- 2014 CAN-AM COMMANDER MAX 1000R XT 976
- 2014 CAN-AM MAVERICK 1000R 976
- 2014 CAN-AM MAVERICK MAX 1000R 976
- 2014 CAN-AM MAVERICK MAX X RS DPS 1000R 976
- 2014 CAN-AM MAVERICK X MR 1000R 976
- 2014 CAN-AM MAVERICK X RS 1000R 976
- 2014 CAN-AM MAVERICK X RS DPS 1000R 976
- 2014 CAN-AM MAVERICK X XC DPS 1000R 976
- 2013 CAN-AM COMMANDER 1000 976
- 2013 CAN-AM COMMANDER 1000 DPS 976
- 2013 CAN-AM COMMANDER 1000R DPS 976
- 2013 CAN-AM COMMANDER 1000R DPS 976
- 2013 CAN-AM COMMANDER 1000 LTD 976
- 2013 CAN-AM COMMANDER 1000 X 976
- 2013 CAN-AM COMMANDER 1000 XT 976
- 2013 CAN-AM COMMANDER 800R 800
- 2013 CAN-AM COMMANDER 800R XT 800
- 2013 CAN-AM COMMANDER 800R XT 800
- 2013 CAN-AM MAVERICK 1000R 976
- 2013 CAN-AM MAVERICK X RS 1000R 976
- 2012 CAN-AM COMMANDER 1000 976
- 2012 CAN-AM COMMANDER 1000 LTD 976
- 2012 CAN-AM COMMANDER 1000 X 976
- 2012 CAN-AM COMMANDER 1000R 976
- 2012 CAN-AM COMMANDER 800R 800
- 2012 CAN-AM COMMANDER 800R XT 800
- 2011 CAN-AM COMMANDER 1000 976
- 2011 CAN-AM COMMANDER 1000 X 976
- 2011 CAN-AM COMMANDER 1000R 976
- 2011 CAN-AM COMMANDER 800R 800
- 2011 CAN-AM COMMANDER 800R XT 800
- 2015 CAN-AM COMMANDER 1000 XT-P 976
- 2015 CAN-AM COMMANDER 800R 800
- 2015 CAN-AM COMMANDER 800R DPS 800
- 2015 CAN-AM COMMANDER 800R XT 800
- 2015 CAN-AM COMMANDER MAX 1000 DPS 976
- 2015 CAN-AM COMMANDER MAX 1000 LTD 976
- 2015 CAN-AM COMMANDER MAX 1000R 976
- 2015 CAN-AM COMMANDER MAX 1000R X DS 976 EXC TURBO
- 2015 CAN-AM COMMANDER MAX 1000R X RS DPS 976
- 2015 CAN-AM MAVERICK 1000R X XC DPS 976
- 2015 CAN-AM MAVERICK MAX 1000R 976
- 2015 CAN-AM MAVERICK MAX 1000R X DS 976 EXC TURBO
- 2015 CAN-AM MAVERICK MAX 1000R X RS DPS 976
- 2014 CAN-AM COMMANDER 1000 976
- 2014 CAN-AM COMMANDER 1000 DPS 976
- 2014 CAN-AM COMMANDER 1000 LTD 976
- 2014 CAN-AM COMMANDER 1000 XT 976
- 2014 CAN-AM COMMANDER 1000 XT-P 976
- 2014 CAN-AM COMMANDER 800R 800
- 2014 CAN-AM COMMANDER 800R DPS 800
- 2014 CAN-AM COMMANDER 800R XT 800
- 2014 CAN-AM COMMANDER MAX 1000 DPS 976
- 2014 CAN-AM COMMANDER MAX 1000R XT 976
- 2014 CAN-AM MAVERICK 1000R 976
- 2014 CAN-AM MAVERICK MAX 1000R 976
- 2014 CAN-AM MAVERICK MAX X RS DPS 1000R 976
- 2014 CAN-AM MAVERICK X MR 1000R 976
- 2014 CAN-AM MAVERICK X RS 1000R 976
- 2014 CAN-AM MAVERICK X RS DPS 1000R 976
- 2013 CAN-AM COMMANDER 1000 976
- 2013 CAN-AM COMMANDER 1000 DPS 976
- 2013 CAN-AM COMMANDER 1000R DPS 976
- 2013 CAN-AM COMMANDER 1000R DPS 976
- 2013 CAN-AM COMMANDER 1000 LTD 976
- 2013 CAN-AM COMMANDER 1000 X 976
- 2013 CAN-AM COMMANDER 1000 XT 976
- 2013 CAN-AM COMMANDER 800R 800
- 2013 CAN-AM COMMANDER 800R XT 800
- 2013 CAN-AM COMMANDER 800R XT 800
- 2013 CAN-AM MAVERICK 1000R 976
- 2013 CAN-AM MAVERICK X RS 1000R 976
- 2012 CAN-AM COMMANDER 1000 976
- 2012 CAN-AM COMMANDER 1000 LTD 976
- 2012 CAN-AM COMMANDER 1000 X 976
- 2012 CAN-AM COMMANDER 1000R 976
- 2012 CAN-AM COMMANDER 800R 800
- 2012 CAN-AM COMMANDER 800R XT 800
- 2011 CAN-AM COMMANDER 1000 976
- 2011 CAN-AM COMMANDER 1000 X 976
- 2011 CAN-AM COMMANDER 1000R 976
- 2011 CAN-AM COMMANDER 800R 800
- 2011 CAN-AM COMMANDER 800R XT 800



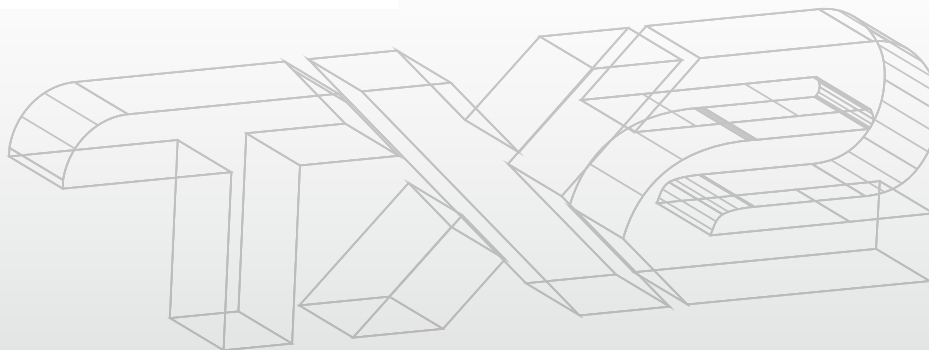
ESPECIFICACIONES

Forma del filtro de aire: Redondo Recto
Material del filtro de aire: Gasa de algodón/ Esponja
Brida Diámetro interior: 2,375 in (60 mm)
Longitud de la brida: 0,75 in (19 mm)
Bridas: 1
Tipo de brida: Centrada
Altura: 6,063 pulgadas (154 mm)
Diámetro exterior: 4,438 pulg. (113 mm)
Cubierta superior: Caucho
Lavable: Sí
Peso: 0,9 libras (0,4 kg)
Cantidad de relubricación del filtro: 1,42 oz (42 ml)



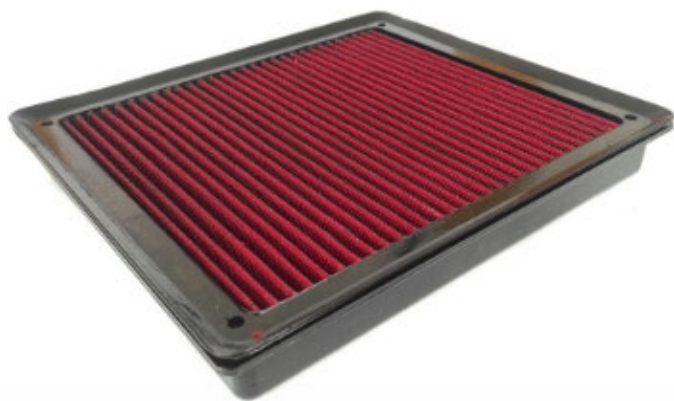
ESPECIFICACIONES

Forma del filtro de aire: Redondo Recto
Material del filtro de aire: Gasa de algodón
Brida Diámetro interior: 2,375 in (60 mm)
Longitud de la brida: 0,75 in (19 mm)
Bridas: 1
Tipo de brida: Centrada
Altura: 6,063 pulgadas (154 mm)
Diámetro exterior: 4,438 pulg. (113 mm)
Material superior: Caucho
Lavable: Sí
Estilo del producto: Filtro de aire universal recto redondo
Peso: 0,9 libras (0,4 kg)
Cantidad de relubricación del filtro: 1,42 oz (42 ml)



2016 CAN-AM OUTLANDER L 450 DPS 450
 2016 CAN-AM OUTLANDER L 570 570
 2016 CAN-AM OUTLANDER L 570 DPS 570
 2016 CAN-AM OUTLANDER L 570 LE 570
 2016 CAN-AM OUTLANDER L 570 MOSSY OAK HUNTING EDITION 570
 2016 CAN-AM OUTLANDER L 570 X MR 570
 2016 CAN-AM OUTLANDER L MAX 450 450
 2016 CAN-AM OUTLANDER L MAX 450 DPS 450
 2016 CAN-AM OUTLANDER L MAX 570 570
 2016 CAN-AM OUTLANDER L MAX 570 DPS 570
 2016 CAN-AM OUTLANDER LX MR 570 570
 2016 CAN-AM OUTLANDER MAX 1000 EFI LTD 1000
 2016 CAN-AM OUTLANDER MAX 1000 EFI XT 1000
 2016 CAN-AM OUTLANDER MAX 1000 EFI XT-P 1000
 2016 CAN-AM OUTLANDER MAX 570 DPS 570
 2016 CAN-AM OUTLANDER MAX 570 XT 570
 2016 CAN-AM OUTLANDER MAX 650 EFI DPS 650
 2016 CAN-AM OUTLANDER MAX 650 EFI XT 650
 2016 CAN-AM OUTLANDER MAX 850 XT 850
 2016 CAN-AM OUTLANDER MAX 850 XT-P 850
 2016 CAN-AM RENEGADE 1000 976
 2016 CAN-AM RENEGADE 1000 X MR 976
 2016 CAN-AM RENEGADE 1000 X XC 976
 2016 CAN-AM RENEGADE 570 570
 2016 CAN-AM RENEGADE 850 850
 2016 CAN-AM RENEGADE 850 X XC 850
 2015 CAN-AM OUTLANDER 1000 6X6 XT 1000
 2015 CAN-AM OUTLANDER 1000 EFI DPS 1000
 2015 CAN-AM OUTLANDER 1000 EFI XT 1000
 2015 CAN-AM OUTLANDER 1000 EFI XT-P 1000
 2015 CAN-AM OUTLANDER 1000 X MR 1000
 2015 CAN-AM OUTLANDER 500 EFI DPS 500
 2015 CAN-AM OUTLANDER 500 EFI XT 500
 2015 CAN-AM OUTLANDER 650 6X6 XT 650
 2015 CAN-AM OUTLANDER 650 EFI 650
 2015 CAN-AM OUTLANDER 650 EFI DPS 650
 2015 CAN-AM OUTLANDER 650 EFI XT 650
 2015 CAN-AM OUTLANDER 650 X MR 650
 2015 CAN-AM OUTLANDER 800R EFI 800
 2015 CAN-AM OUTLANDER 800R EFI DPS 800
 2015 CAN-AM OUTLANDER 800R EFI X MR 800
 2015 CAN-AM OUTLANDER 800R EFI XT 800
 2015 CAN-AM OUTLANDER 800R EFI XT-P 800
 2015 CAN-AM OUTLANDER L 450 450
 2015 CAN-AM OUTLANDER L 450 DPS 450
 2015 CAN-AM OUTLANDER L 500 500
 2015 CAN-AM OUTLANDER L 500 DPS 500
 2015 CAN-AM OUTLANDER L MAX 450 450
 2015 CAN-AM OUTLANDER L MAX 450 DPS 450
 2015 CAN-AM OUTLANDER L MAX 500 500
 2015 CAN-AM OUTLANDER L MAX 500 DPS 500
 2015 CAN-AM OUTLANDER MAX 1000 EFI DPS 1000
 2015 CAN-AM OUTLANDER MAX 1000 EFI LTD 1000
 2015 CAN-AM OUTLANDER MAX 1000 EFI X MR 1000
 2015 CAN-AM OUTLANDER MAX 1000 EFI XT 1000
 2015 CAN-AM OUTLANDER MAX 1000 EFI XT-P 1000
 2015 CAN-AM OUTLANDER MAX 500 EFI DPS 500
 2015 CAN-AM OUTLANDER MAX 500 EFI XT 500
 2015 CAN-AM OUTLANDER MAX 650 EFI 650
 2015 CAN-AM OUTLANDER MAX 650 EFI DPS 650
 2015 CAN-AM OUTLANDER MAX 650 EFI XT 650
 2015 CAN-AM OUTLANDER MAX 800R EFI DPS 800
 2015 CAN-AM OUTLANDER MAX 800R EFI XT 800
 2015 CAN-AM OUTLANDER MAX 800R EFI XT-P 800
 2015 CAN-AM RENEGADE 1000 976
 2015 CAN-AM RENEGADE 1000 X XC 976
 2015 CAN-AM RENEGADE 500 500
 2015 CAN-AM RENEGADE 800R 800
 2015 CAN-AM RENEGADE 800R X XC 800
 2014 CAN-AM OUTLANDER 1000 EFI DPS 1000
 2014 CAN-AM OUTLANDER 1000 EFI XT 1000
 2014 CAN-AM OUTLANDER 1000 EFI XT-P 1000
 2014 CAN-AM OUTLANDER 1000 X MR 1000
 2014 CAN-AM OUTLANDER 500 EFI 500
 2014 CAN-AM OUTLANDER 500 EFI DPS 500
 2014 CAN-AM OUTLANDER 500 EFI XT 500
 2014 CAN-AM OUTLANDER 650 EFI 650
 2014 CAN-AM OUTLANDER 650 EFI DPS 650
 2014 CAN-AM OUTLANDER 650 EFI XT 650
 2014 CAN-AM OUTLANDER 650 X MR 650
 2014 CAN-AM OUTLANDER 800R EFI 800
 2014 CAN-AM OUTLANDER 800R EFI DPS 800
 2014 CAN-AM OUTLANDER 800R EFI XT 800
 2014 CAN-AM OUTLANDER 800R EFI XT-P 800
 2014 CAN-AM OUTLANDER MAX 1000 EFI DPS 1000
 2014 CAN-AM OUTLANDER MAX 1000 EFI LTD 1000
 2014 CAN-AM OUTLANDER MAX 1000 EFI XT 1000
 2014 CAN-AM OUTLANDER MAX 1000 EFI XT-P 1000
 2014 CAN-AM OUTLANDER MAX 500 EFI 500
 2014 CAN-AM OUTLANDER MAX 500 EFI DPS 500
 2014 CAN-AM OUTLANDER MAX 500 EFI XT 500
 2014 CAN-AM OUTLANDER MAX 650 EFI 650
 2014 CAN-AM OUTLANDER MAX 650 EFI DPS 650
 2014 CAN-AM OUTLANDER MAX 650 EFI XT 650
 2014 CAN-AM OUTLANDER MAX 800R EFI DPS 800
 2014 CAN-AM OUTLANDER MAX 800R EFI XT 800
 2014 CAN-AM OUTLANDER MAX 800R EFI XT-P 800

2014 CAN-AM RENEGADE 1000 976
 2014 CAN-AM RENEGADE 1000 X XC 976
 2014 CAN-AM RENEGADE 500 500
 2014 CAN-AM RENEGADE 800R 800
 2014 CAN-AM RENEGADE 800R X XC 800
 2013 CAN-AM OUTLANDER 1000 EFI DPS 1000
 2013 CAN-AM OUTLANDER 1000 EFI XT 1000
 2013 CAN-AM OUTLANDER 1000 EFI XT-P 1000
 2013 CAN-AM OUTLANDER 1000 X MR 1000
 2013 CAN-AM OUTLANDER 500 EFI 500
 2013 CAN-AM OUTLANDER 500 EFI DPS 500
 2013 CAN-AM OUTLANDER 500 EFI XT 500
 2013 CAN-AM OUTLANDER 650 EFI 650
 2013 CAN-AM OUTLANDER 650 EFI DPS 650
 2013 CAN-AM OUTLANDER 650 EFI XT 650
 2013 CAN-AM OUTLANDER 650 X MR 650
 2013 CAN-AM OUTLANDER 800R EFI 800
 2013 CAN-AM OUTLANDER 800R EFI DPS 800
 2013 CAN-AM OUTLANDER 800R EFI X MR 800
 2013 CAN-AM OUTLANDER 800R EFI XT 800
 2013 CAN-AM OUTLANDER 800R EFI XT-P 800
 2013 CAN-AM OUTLANDER MAX 1000 EFI DPS 1000
 2013 CAN-AM OUTLANDER MAX 1000 EFI LTD 1000
 2013 CAN-AM OUTLANDER MAX 1000 EFI XT 1000
 2013 CAN-AM OUTLANDER MAX 1000 EFI XT-P 1000
 2013 CAN-AM OUTLANDER MAX 500 EFI 500
 2013 CAN-AM OUTLANDER MAX 500 EFI DPS 500
 2013 CAN-AM OUTLANDER MAX 500 EFI XT 500
 2013 CAN-AM OUTLANDER MAX 650 EFI 650
 2013 CAN-AM OUTLANDER MAX 650 EFI DPS 650
 2013 CAN-AM OUTLANDER MAX 650 EFI XT 650
 2013 CAN-AM OUTLANDER MAX 800R EFI DPS 800
 2013 CAN-AM OUTLANDER MAX 800R EFI XT 800
 2013 CAN-AM OUTLANDER MAX 800R EFI XT-P 800
 2013 CAN-AM RENEGADE 1000 976
 2013 CAN-AM RENEGADE 1000 X XC 976
 2013 CAN-AM RENEGADE 500 500
 2013 CAN-AM RENEGADE 800R 800
 2013 CAN-AM RENEGADE 800R X XC 800
 2012 CAN-AM OUTLANDER 1000 EFI 1000
 2012 CAN-AM OUTLANDER 1000 EFI XT 1000
 2012 CAN-AM OUTLANDER 800R EFI 800
 2012 CAN-AM OUTLANDER 800R EFI XT 800
 2012 CAN-AM OUTLANDER 800R EFI XT-P 800
 2012 CAN-AM RENEGADE 1000 976
 2012 CAN-AM RENEGADE 1000 EFI X XC 976
 2012 CAN-AM RENEGADE 800R 800
 2012 CAN-AM RENEGADE 800R EFI X XC 800
 2012 CAN-AM RENEGADE 800R X XC 800



ESPECIFICACIONES

Forma de filtro de aire: Panel
 Material del filtro de aire: Gasa de algodón
 Lavable: Sí
 Altura: 1,5 pulgadas (38 mm)
 Longitud exterior: 11,313 pulg. (287 mm)
 Ancho exterior: 9,875 in (251 mm)
 Estilo de producto: Filtro de aire de panel
 Peso: 1,8 libras (0,8 kg)
 Cantidad de relubricación del filtro: 2,69 oz (79 ml)

APLICACIONES

POLARIS

- 2014 POLARIS RZR 4 900 EPS LE 875
- 2014 POLARIS RZR 900 875
- 2014 POLARIS RZR 900 EPS LE 875
- 2013 POLARIS RANGER RZR XP 4 900 875
- 2013 POLARIS RANGER RZR XP 4 900 EPS LE 875
- 2013 POLARIS RANGER RZR XP 900 875
- 2013 POLARIS RANGER RZR XP 900 EPS LE 875
- 2013 POLARIS RANGER RZR XP 900 EPS WALKER EVANS LE 875
- 2013 POLARIS RANGER RZR XP 900 HO JAGGED X EDITION 875
- 2013 POLARIS RANGER RZR XP 900 LE 875
- 2012 POLARIS RANGER RZR XP 4 900 875
- 2012 POLARIS RANGER RZR XP 4 900 EPS LE 875
- 2012 POLARIS RANGER RZR XP 900 875
- 2012 POLARIS RANGER RZR XP 900 LE 875
- 2011 POLARIS RANGER RZR XP 900 875
- 2011 POLARIS RANGER RZR XP 900 LE 875



ESPECIFICACIONES

Material del filtro de aire: Gasa de algodón/ Esponja
 Altura: 12,938 pulgadas (329 mm)
 Diámetro interior de la brida: 3,438 in (87 mm)
 Tipo de brida: Centrada
 Bridas: Ninguno
 Estilo superior: Caucho
 Material superior: Ninguno
 Diámetro exterior: 5 in (127 mm)
 Peso: 2,1 libras (0,9 kg)
 Cantidad de relubricación: 5,57 oz (165 ml)
 Alambre interno: No

APLICACIONES

CAN-AM

- 2021 CAN-AM MAVERICK SPORT 1000R DPS 976
- 2021 CAN-AM MAVERICK SPORT 1000R X MR 976
- 2021 CAN-AM MAVERICK SPORT 1000R X RC 976
- 2021 CAN-AM MAVERICK SPORT 1000R X XC 976
- 2021 CAN-AM MAVERICK SPORT MAX 1000R DPS 976
- 2020 CAN-AM MAVERICK SPORT 1000R DPS 976
- 2020 CAN-AM MAVERICK SPORT 1000R X MR 976
- 2020 CAN-AM MAVERICK SPORT 1000R X RC 976
- 2020 CAN-AM MAVERICK SPORT MAX 1000R DPS 976
- 2019 CAN-AM MAVERICK MAX 1000R DPS 976
- 2019 CAN-AM MAVERICK MAX 1000R DPS T1B 976
- 2019 CAN-AM MAVERICK SPORT 1000R DPS 976
- 2019 CAN-AM MAVERICK X3 MAX TURBO 900
- 2019 CAN-AM MAVERICK X3 MAX TURBO R 900
- 2019 CAN-AM MAVERICK X3 MAX X DS TURBO R 900
- 2019 CAN-AM MAVERICK X3 MAX X RS TURBO R 900
- 2019 CAN-AM MAVERICK X3 TURBO 900
- 2019 CAN-AM MAVERICK X3 TURBO R 900
- 2019 CAN-AM MAVERICK X3 X DS TURBO R 900
- 2019 CAN-AM MAVERICK X3 X MR TURBO 900
- 2019 CAN-AM MAVERICK X3 X MR TURBO R 900
- 2019 CAN-AM MAVERICK X3 X RC TURBO 900
- 2019 CAN-AM MAVERICK X3 X RC TURBO R 900
- 2019 CAN-AM MAVERICK X3 X RS TURBO R 900
- 2018 CAN-AM MAVERICK X3 HO 900
- 2018 CAN-AM MAVERICK X3 MAX TURBO 900
- 2018 CAN-AM MAVERICK X3 MAX TURBO R 900
- 2018 CAN-AM MAVERICK X3 MAX X DS TURBO R 900
- 2018 CAN-AM MAVERICK X3 MAX X RS TURBO R 900
- 2018 CAN-AM MAVERICK X3 TURBO 900
- 2018 CAN-AM MAVERICK X3 TURBO R 900
- 2018 CAN-AM MAVERICK X3 X DS TURBO R 900
- 2018 CAN-AM MAVERICK X3 X MR TURBO 900
- 2018 CAN-AM MAVERICK X3 X MR TURBO R 900
- 2018 CAN-AM MAVERICK X3 X RC TURBO 900
- 2018 CAN-AM MAVERICK X3 X RC TURBO R 900
- 2018 CAN-AM MAVERICK X3 X RS TURBO R 900
- 2017 CAN-AM MAVERICK X3 MAX TURBO R 900
- 2017 CAN-AM MAVERICK X3 MAX X DS TURBO R 900
- 2017 CAN-AM MAVERICK X3 MAX X RS TURBO R 900
- 2017 CAN-AM MAVERICK X3 TURBO 900
- 2017 CAN-AM MAVERICK X3 TURBO R 900
- 2017 CAN-AM MAVERICK X3 X DS TURBO R 900
- 2017 CAN-AM MAVERICK X3 X RS TURBO R 900

ELEMENTO FILTRO AIRE P/G310 GS, P/G310 R TWN (NUEVO)

132-001060



ESPECIFICACIONES

Forma del filtro de aire: Panel
Material del filtro de aire: Gasa de algodón
Altura: 1,531 pulgadas (39 mm)
Longitud exterior: 4 in (102 mm)
Ancho exterior: 3,344 in (85 mm)
Estilo del producto: Panel
Peso: 0,4 libras (0,2 kg)
Cantidad de relubricación del filtro: 0,27 oz (8 ml)

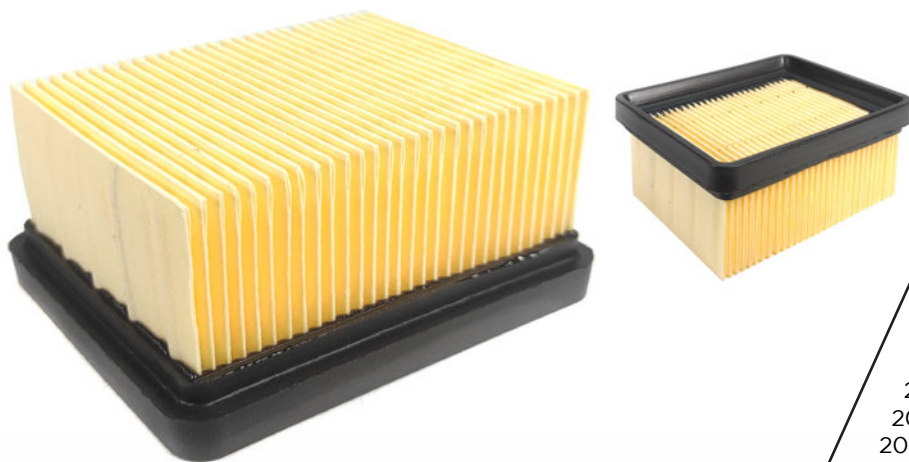
APLICACIONES

BMW MOTORCYCLE

2023 BMW G310GS 313
2023 BMW G310R 313
2023 BMW G310RR 313
2022 BMW G310GS 313
2022 BMW G310R 313
2021 BMW G310GS 313
2021 BMW G310GS 40 YEARS GS EDITION 313
2021 BMW G310R 313
2020 BMW G310GS 313
2020 BMW G310R 313
2019 BMW G310GS 313
2019 BMW G310R 313
2018 BMW G310GS 313
2018 BMW G310R 313
2017 BMW G310R 313

ELEMENTO FILTRO AIRE TECHX2 P/ G310 GS, P/ G310 R

132-001071



ESPECIFICACIONES

Forma del filtro de aire: Panel
Material del filtro de aire: Gasa de algodón
Altura: 1,531 pulgadas (39 mm)
Longitud exterior: 4 in (102 mm)
Ancho exterior: 3,344 in (85 mm)
Estilo del producto: Panel

APLICACIONES

BMW MOTORCYCLE

2023 BMW G310GS 313
2023 BMW G310R 313
2023 BMW G310RR 313
2022 BMW G310GS 313
2022 BMW G310R 313
2021 BMW G310GS 313
2021 BMW G310GS 40 YEARS GS EDITION 313
2021 BMW G310R 313
2020 BMW G310GS 313
2020 BMW G310R 313
2019 BMW G310GS 313
2019 BMW G310R 313
2018 BMW G310GS 313
2018 BMW G310R 313
2017 BMW G310R 313

ELEMENTO FILTRO AIRE TECHX2 UNIVERSAL P/ ATV'S (4152)

132-001070



APLICACIONES

UNIVERSAL: PARA ATV

ESPECIFICACIONES

Material del filtro de aire: Esponja
Lavable: Sí
Diámetro interno 38.10 mm (1 1/2)
Diámetro externo 88.9 mm (3 1/2)
Altura: 101.60MM (4)

ELEMENTO FILTRO AIRE TECHX2 UNIVERSAL P/ ATV'S (4245)

132-001069



APLICACIONES

UNIVERSAL: PARA ATV

ESPECIFICACIONES

Material del filtro de aire: Esponja
Lavable: Sí
Diámetro interno 63.50 mm (2 1/2)
Diámetro externo 101.60 mm (4)
Altura: 101.60 mm (4)

ELEMENTO FILTRO AIRE TECHX2 UNIVERSAL P/ ATV'S (4229)

132-001068



APLICACIONES

UNIVERSAL: PARA ATV

ESPECIFICACIONES

Material del filtro de aire: Esponja
Lavable: Sí
Diámetro interno 57.15 mm (2 1/4)
Diámetro externo 101.60MM (4)
Altura: 101.60MM (4)

ELEMENTO FILTRO AIRE TECHX2 UNIVERSAL P/ ATV'S (4200)

132-001067



APLICACIONES

UNIVERSAL: PARA ATV

ESPECIFICACIONES

Material del filtro de aire: Esponja
Lavable: Sí
Diámetro interno 50.8 mm (2)
Diámetro externo 88.9 mm (3 1/2)
Altura: 101.60MM (4)

ELEMENTO FILTRO AIRE TECHX2 UNIVERSAL P/ ATV'S (4182)

132-001066



APLICACIONES

UNIVERSAL: PARA ATV

ESPECIFICACIONES

Material del filtro de aire: Esponja
Lavable: Sí
Diámetro interno 44.4 mm (1 3/4)
Diámetro externo 88.9 mm (3 1/2)
Altura: 101.60 mm (4)

ELEMENTO FILTRO AIRE TECHX2 P/ TRX 250 (2501)

132-001065



APLICACIONES

HONDA MOTORCYCLE: TRX 250

ESPECIFICACIONES

Material del filtro de aire: Esponja
Lavable: Sí
Diámetro interno 38 mm

ELEMENTO FILTRO AIRE TECHX2 P/ TRX 450/500 (5000)

132-001064



ESPECIFICACIONES

Material del filtro de aire: Esponja
Lavable: Sí
Altura 4.125 in (105 mm)
Diámetro Interior 1.438 in (37 mm)
Diámetro Externo 3.625 in (92 mm)

APLICACIONES

HONDA MOTORCYCLE

SXS700M2 Pioneer 2016 - 2023
SXS700M2 Pioneer 700 Forest 2016 - 2023
SXS700M2 Pioneer Deluxe 2016 - 2023
XS700M4 Pioneer 700-4 2016 - 2023
SXS700M4 Pioneer 700-4 Deluxe 2016 - 2023
SXS700M4 Pioneer 700-4 Forest 2016 - 2023
TRX420FA2 FourTrax Rancher 4x4 AT DCT w/EPS 2014 - 2023
TRX420FE1 FourTrax Rancher 4x4 ES 2014 - 2023
TRX420FM1 FourTrax Rancher 4x4 2014 - 2023
TRX420FM2 FourTrax Rancher 4x4 w/EPS 2014 - 2023
TRX420TE1 FourTrax Rancher ES 2014 - 2023
TRX420TM1 FourTrax Rancher 2014 - 2023
TRX520FE2 FourTrax Foreman 4x4 ES EPS 2014 - 2023
TRX520FM1 FourTrax Foreman 4x4 2014 - 2023
TRX520FM2 FourTrax Foreman 4x4 ES EPS 2014 - 2023
TRX500FE2 FourTrax Foreman 4x4 w/EPS 2013 - 2018
TRX500FM1 FourTrax Foreman 4x4 2013 - 2018

ELEMENTO FILTRO AIRE TECHX2 P/ DUKE 250-390 (1217)

132-001063



ESPECIFICACIONES

Material del filtro de aire: Gasa De Algodón
Altura: 1.344 in (34 mm)
Largo Exterior: 5.875 in (149 mm)
Anchura Exterior: 4.281 in (109 mm)

APLICACIONES

KTM MOTORCYCLE

2022 KTM 250 Adventure 250
2022 KTM 390 Adventure 390
2022 KTM RC125 124
2022 KTM RC200 199
2022 KTM RC390 373
2021 KTM 125 Duke 125
2021 KTM 200 Duke 200
2021 KTM 250 Adventure 250
2021 KTM 390 Adventure 390
2020 KTM 125 Duke 125
2020 KTM 250 Adventure 250
2020 KTM 390 Adventure 373
2020 KTM 390 Duke 373
2019 KTM 125 Duke 125
2019 KTM 250 Duke 249
2019 KTM 390 Duke 373
2018 KTM 125 Duke 125
2018 KTM 250 Duke 249
2018 KTM 390 Duke 373
2017 KTM 125 Duke 125
2017 KTM 250 Duke 249
2017 KTM 390 Duke 373

HUSQVARNA MOTORCYCLE

2022 Husqvarna Svartpilen 401 373
2022 Husqvarna Vitpilen 401 373
2021 Husqvarna Svartpilen 401 373
2021 Husqvarna Vitpilen 401 373
2020 Husqvarna Svartpilen 200 200
2020 Husqvarna Svartpilen 250 249
2020 Husqvarna Svartpilen 401 373
2020 Husqvarna Vitpilen 401 373
2019 Husqvarna Svartpilen 401 373
2019 Husqvarna Vitpilen 401 373
2018 Husqvarna Svartpilen 401 373
2018 Husqvarna Vitpilen 401 373

ELEMENTO FILTRO AIRE TECHX2 P/ F850 GS ADVENTURE (8518)



ESPECIFICACIONES

Material del filtro de aire: Gasa De Algodón
Altura: 1.313 in (33 mm)
Largo Exterior: 6.938 in (176 mm)
Anchura Exterior: 5.125 in (130 mm)

APLICACIONES

BMW MOTORCYCLE

2023 BMW F750GS 853
2023 BMW F850GS 853
2023 BMW F850GS Adventure 853
2023 BMW F900 895
2023 BMW F900R 895
2022 BMW F750GS 853
2022 BMW F850GS 853
2022 BMW F850GS Adventure 853
2022 BMW F900R 895
2022 BMW F900R SE 895
2022 BMW F900XR 895
2022 BMW F900XR TE 895
2021 BMW F750GS 853
2021 BMW F750GS 40Y GS Edition 853
2021 BMW F850GS 853
2021 BMW F850GS 40 Years GS Edition 853
2021 BMW F850GS Adventure 853
2021 BMW F850GS Adventure 40 Y GS Edition 853
2021 BMW F900R 895
2021 BMW F900XR 895
2020 BMW F750GS 853
2020 BMW F850GS 853
2020 BMW F850GS Adventure 853
2020 BMW F900R 895
2020 BMW F900XR 895
2019 BMW F750GS 853
2019 BMW F850GS 853
2019 BMW F850GS Adventure 853
2018 BMW F750GS 853
2018 BMW F850GS 853
2018 BMW F850GS Adventure 853



APLICACIONES

BMW MOTORCYCLE

- 2023 BMW F750GS 853
- 2023 BMW F850GS 853
- 2023 BMW F850GS Adventure 853
- 2023 BMW F900 895
- 2023 BMW F900R 895
- 2022 BMW F750GS 853
- 2022 BMW F850GS 853
- 2022 BMW F850GS Adventure 853
- 2022 BMW F900R 895
- 2022 BMW F900R SE 895
- 2022 BMW F900XR 895
- 2022 BMW F900XR TE 895
- 2021 BMW F750GS 853
- 2021 BMW F750GS 40 Years GS Edition 853
- 2021 BMW F850GS 853
- 2021 BMW F850GS 40 Years GS Edition 853
- 2021 BMW F850GS Adventure 853
- 2021 BMW F850GS Adventure 40 Years GS Edition 853
- 2021 BMW F900R 895
- 2021 BMW F900XR 895
- 2020 BMW F750GS 853
- 2020 BMW F850GS 853
- 2020 BMW F850GS Adventure 853
- 2020 BMW F900R 895
- 2020 BMW F900XR 895
- 2019 BMW F750GS 853
- 2019 BMW F850GS 853
- 2019 BMW F850GS Adventure 853
- 2018 BMW F750GS 853
- 2018 BMW F850GS 853
- 2018 BMW F850GS Adventure 853

ESPECIFICACIONES

Material del filtro de aire: Gasa De Algodón
 Lavable: Sí
 Altura: 1.313 in (33 mm)
 Largo Exterior: 6.938 in (176 mm)
 Anchura Exterior: 5.125 in (130 mm)

